

full-spectrum  
solutions



guestsupply®

**OPERATING SUPPLIES  
& EQUIPMENT**

UK & EUROPE  
PRODUCT GUIDE

# CONTENTS

01	LINENS	8
02	GUESTROOM ACCESSORIES	16
03	BATHROOM ACCESSORIES & HARDWARE	38
04	BEDS, CRIBS & ACCESSORIES	46
05	ELECTRONICS & APPLIANCES	52
06	FURNITURE, FIXTURES & EQUIPMENT	70
07	JANITORIAL & HOUSEKEEPING	78
08	CHILDREN'S PRODUCTS	84
09	SUSTAINABLE PRODUCTS	86
10	BESPOKE	98

# we know hotels

INSIDE AND OUT

For over 40 years, Guest Supply has been an industry leader in full-spectrum hotel solutions. Our vast resources, range of products, and expert customer service are designed to help you elevate your guests' experience.

## **WE GOT THE GOODS**

At Guest Supply, we offer quality products that ensure customer satisfaction while providing savings on operational costs. Choose from a wide selection of high-touch amenities and linens that influence the guest experience, and keep operations running smoothly with superior tactical supplies.

## **WE DELIVER**

With one of the largest distribution and strategic sourcing networks in the world, Guest Supply is uniquely positioned to deliver what you need, when you need it.

## **WE ARE HERE TO HELP**

Our dedicated team of Solution Specialists are at your service. This high-level team is made up of experts in hospitality, stewards of brand compliance, and individuals who understand integrated operations support. They are prepared to help solve problems and discover operational efficiencies for your business.

**This brochure shows a selection of the products we offer; if you cannot find what you are looking for, please do not hesitate to contact us and our team will be happy to help!**

# our sustainability story

## Corporate Social Responsibility

### The people

At Guest Supply, we make it our mission to give back, not only to our customers, but to our employees, who work hard each day to provide a full-service solution of excellence.

Guest Supply offers a secure and healthy environment for its employees; supporting personal development and volunteer opportunities.

As a global company, we work with people from a variety of backgrounds; our goal to be a diverse and inclusive organisation is essential to building a strong future for our company.

## Committed to Sustainability

Guest Supply firmly believes that meeting the needs of our customers shouldn't compromise our commitment to conservation. From eco-conscious distribution practices to the selection of manufacturers and suppliers with whom we partner, we make all decisions with the environment and social responsibility in mind.

### So, what are we doing to help the environment?

**WE reduce** the carbon footprint of our fleet and distribution operations

**WE use** recycled shipping cartons and packaging

**WE use** recycled polyester

**WE recycle** shipping materials and amenities' plastic bottles

**WE offer** products that:

- Are made from recycled and biodegradable materials
- Reduce energy consumption
- Reduce water usage
- Contain natural ingredients and are not tested on animals

## Partnerships that Make a Difference

### Better the world with Clean the World®

Clean the World® is a global enterprise dedicated to reducing disease in impoverished countries. Guest Supply has partnered with Clean the World®, collecting discarded hand soap and liquids from our lodging partners, then re-manufacturing and distributing them to those in need, to help combat hygiene-related illnesses.

### The SAFAI Foundation

Since 2016, Guest Supply has partnered with The SAFAI Foundation, donating supplies and a portion of each coffee sale to help coffee farmers adopt sustainable farming techniques, replant their farms and provide workers and the communities access to better healthcare and educational facilities.



LINENS

01

## High quality mattress and pillow protection

for a good night's sleep

### Clean Brands Hotel Kit Waterproof Protector & Encasement

- 100% bed bug escape and bite proof
- Zip-N-Click patented closure device
- Stretchy side walls for easy installation
- Hotel quality, bright, optic white fabric
- 10 year no rip commercial warranty

Available in the following sizes:

**75x190x18-38cm**

**PRODUCT CODE**  
0046360

**90x190x18-38cm**

**PRODUCT CODE**  
0046361

**100x200x18-38cm**

**PRODUCT CODE**  
0046363

**107x190x18-38cm**

**PRODUCT CODE**  
0046364

**120x190x18-38cm**

**PRODUCT CODE**  
0046365

**120x200x18-38cm**

**PRODUCT CODE**  
0046366

**135x190x23-45cm**

**PRODUCT CODE**  
0046367

**140x190x23-45cm**

**PRODUCT CODE**  
0046368

**140x200x23-45cm**

**PRODUCT CODE**  
0046369

**150x200x23-45cm**

**PRODUCT CODE**  
0040001

**160x200x23-45cm**

**PRODUCT CODE**  
0046370

**180x200x23-45cm**

**PRODUCT CODE**  
0046371

**200x200x23-45cm**

**PRODUCT CODE**  
0046372

**210x210x23-45cm**

**PRODUCT CODE**  
0046373

Breathable  
Fabric



## Clean Brands Waterproof Mattress Protector

- 100% bed bug escape and bite proof
- Zip-N-Click patented closure device
- Stretchy side walls for easy installation
- Hotel quality, bright, optic white fabric
- 10 year no-rip commercial warranty

Available in the following sizes:

**75x190x18-38cm**  
**PRODUCT CODE**  
0046374

**90x190x18-38cm**  
**PRODUCT CODE**  
0046375

**90x200x18-38cm**  
**PRODUCT CODE**  
0040107

**100x200x18-38cm**  
**PRODUCT CODE**  
0046376

**120x190x18-38cm**  
**PRODUCT CODE**  
0046377

**120x200x18-38cm**  
**PRODUCT CODE**  
0046378

**135x190x23-45cm**  
**PRODUCT CODE**  
0046379

**135x200x23-45cm**  
**PRODUCT CODE**  
0046885

**140x190x23-45cm**  
**PRODUCT CODE**  
0046380

**140x200x23-45cm**  
**PRODUCT CODE**  
0046381



**150x200x23-45cm**  
**PRODUCT CODE**  
0046382

**160x200x23-45cm**  
**PRODUCT CODE**  
0042136

**180x200x23-45cm**  
**PRODUCT CODE**  
0044290

**200x200x23-45cm**  
**PRODUCT CODE**  
0042140

**210x210x23-45cm**  
**PRODUCT CODE**  
0046384

## Clean Brands Banded Waterproof Mattress Protector

- 100% waterproof sleep surface
- Banded style sleep surface protection
- Blocks allergens and dust mites
- Soft, quiet, breathable fabric

Available in the following sizes:

**75x190x18-38cm**  
**PRODUCT CODE**  
0046416

**90x200x18-38cm**  
**PRODUCT CODE**  
0046418

**100x200x18-38cm**  
**PRODUCT CODE**  
0044307

**120x190x18-38cm**  
**PRODUCT CODE**  
0046420

**140x190x23-45cm**  
**PRODUCT CODE**  
0046422



**140x200x23-45cm**  
**PRODUCT CODE**  
0046423

**150x200x23-45cm**  
**PRODUCT CODE**  
0046424

**160x200x23-45cm**  
**PRODUCT CODE**  
0044308

**180x200x23-45cm**  
**PRODUCT CODE**  
0046426

**200x200x23-45cm**  
**PRODUCT CODE**  
0046427

**210x210x23-45cm**  
**PRODUCT CODE**  
0046428





## Hygienic and Practical Solutions

### Clean Brands Mattress Encasement PRO

- 100% waterproof sleep surface
- 100% bed bug escape and bite proof
- Zip-N-Click patented closure device
- Stretchy side walls for easy installation
- Ability to be commercially laundered
- Hotel quality, bright, optic white
- Soft, quiet and breathable
- Microluxe fabric
- 10 year no rip commercial warranty



Available in the following sizes:

**90x190x18-38cm**  
**PRODUCT CODE**  
 0040028

**90x200x18-38cm**  
**PRODUCT CODE**  
 0040029

**140x190x23-45cm**  
**PRODUCT CODE**  
 0040030

**160x200x23-45cm**  
**PRODUCT CODE**  
 0040031

**200x200x23-45cm**  
**PRODUCT CODE**  
 0040032

**180x200x23-45cm**  
**PRODUCT CODE**  
 0039687

**100x200x18-38cm**  
**PRODUCT CODE**  
 0039688

**75x190x18-38cm**  
**PRODUCT CODE**  
 0046400

**120x190x18-38cm**  
**PRODUCT CODE**  
 0046401

**120x200x18-38cm**  
**PRODUCT CODE**  
 0046402

**135x190x23-45cm**  
**PRODUCT CODE**  
 0046403

**140x200x23-45cm**  
**PRODUCT CODE**  
 0046404

**210x210x23-45cm**  
**PRODUCT CODE**  
 0046406

### Clean Brands Zip & Link Pro Mattress Encasement

- 100% bed bug escape and bite proof
- Zip-N-Click patented closure device
- Stretchy side walls for easy installation
- Hotel quality, bright, optic white fabric

Available in the following sizes:

**90x200cm – 2 Pack**  
**PRODUCT CODE** 0040033

**90x190cm – 2 Pack**  
**PRODUCT CODE** 00400723

**100x200cm – 2 Pack**  
**PRODUCT CODE** 0046407



### Clean Brands Pillow Protector

- Water-resistant
- Provides allergen and dust mite protection
- Soft, quiet, breathable fabric
- 10 year no rip commercial warranty

Available in the following sizes:

**50x75cm**  
**PRODUCT CODE**  
 0037650

**50x90cm**  
**PRODUCT CODE**  
 0037651



All  
 Clean Brands  
 products are  
 Buy-to-Order

### Clean Brands Antimicrobial Waterproof Pillow Protector

- 100% waterproof
- Zippered
- Hyper breathable with vented end for maximum airflow
- Blocks allergens and dust mites  
 10 year no rip commercial warranty

Available in the following sizes:

**50x75cm**  
**PRODUCT CODE**  
 0044264

**50x90cm**  
**PRODUCT CODE**  
 0044265



### Shawl Collar Cotton Towelling Bathrobe

- 100% pure cotton
- 400GSM
- Shawl collar
- Generous pockets
- Detachable belt
- Hanger loop for convenient storage



#### PRODUCT CODE

0047022

Buy to Order - MOQ of 20 units

### Organic Cotton Shawl Collar Bathrobe

- 100% organic cotton towelling
- 400GSM
- Shawl collar
- Generous pockets
- Detachable belt
- Hanger loop for convenient storage



#### PRODUCT CODE

0047067

Buy to Order - MOQ of 20 units

### Waffle Kimono Style Bathrobe

- Polycotton
- 200GSM
- Kimono style collar
- Generous side pockets
- Detachable belt
- Hanger loop for convenient storage



#### PRODUCT CODE

0047068

Buy to Order -  
MOQ of 20 units

Visit our  
bespoke  
section  
for more  
options

### Duvet Storage Bag

- Clear vinyl storage bag
- Zip to close
- 51x26x57cm

PRODUCT CODE 0047447

### Pillow Storage Bag

- Clear vinyl storage bag
- Zip to close
- 41x17x68cm

PRODUCT CODE 0047446

Space Saving  
and Hygienic



### Luxury Slipper

- Top Fabric: Microterry 21x20cm
- Top Foam: 0.45mm
- Shell: fibre
- Sole fabric: Microterry 11x31cm
- Sole foam: 15mm
- Sole PVC: 1.8mm
- Bind size: 17mm

#### Large Slipper (31.5cm)

PRODUCT CODE 0033824

#### Medium Slipper (28.5cm)

PRODUCT CODE 0033825

Sumptuously  
Soft Fabric



Padded for  
Superior  
Comfort

### Open Toe Slipper

- White open toe Terry slipper, 29cm

PRODUCT CODE 0047365



### Standard Slipper

- 5mm EVA bottom sole, 3mm sponge cotton velour upper sole
- 365 gram paper card
- 3mm sponge polar fleece inner shoe bridge



Available in the following sizes:

Large Slipper  
(30.5cm/11cm width)

PRODUCT CODE 0047368

Medium Slipper  
(28cm/10cm width)

PRODUCT CODE 0047370

Children's Slipper  
(24cm)

PRODUCT CODE 0037359

Children's Slipper  
(20cm)

PRODUCT CODE 0037360

### Cork Sole Slipper

- 3mm textured cork sole, 3mm sponge cotton velour upper sole
- 3mm sponge polar fleece inner shoe bridge
- One size fits all, 30.5cm
- Packaged with FSC paper band

PRODUCT CODE 0047551



### Closed Toe Slipper

- White closed toe Terry slipper with an EVA sole, 29cm

PRODUCT CODE SLIPCLOSETOE





### Pedal Bins

- Easy clean plastic bucket
- Lip for hiding excess bag
- Stainless steel

Available in UK only:

**3L CHROME FINISH**  
**PRODUCT CODE**  
0046516

**3L MATTE BLACK**  
**PRODUCT CODE**  
0042436

**6L BRUSHED STAINLESS STEEL**  
**PRODUCT CODE**  
0047329

Available in Europe (Excl. UK) only:

**3L CHROME FINISH**  
**PRODUCT CODE**  
0047034

**5L CHROME FINISH**  
**PRODUCT CODE**  
0037671

**3L MATTE BLACK**  
**PRODUCT CODE**  
0046088

**5L MATTE BLACK**  
**PRODUCT CODE**  
0046113

### Double Layer Bins

- Designed to conceal bin liners
- Polished stainless steel interior
- Fixed brush steel collar
- Durable construction
- Rubberised floor protecting base

Available in UK only:

**9L BLACK BIN WITH CHROME RIM**  
**PRODUCT CODE**  
0042401

**9L BRUSHED STAINLESS STEEL BIN WITH SILVER RIM**  
**PRODUCT CODE**  
0042402

Available in Europe (Excl. UK) only:

**10L BLACK BIN WITH CHROME RIM**  
**PRODUCT CODE**  
0047036

**9L BRUSHED STAINLESS STEEL BIN WITH SILVER RIM**  
**PRODUCT CODE**  
0042402

Easy clean plastic bucket



Conceals bin liners



## Stylish and practical recycling solutions

### Round Recycling Bin

- Black recycling bin with 2 clearly labelled compartments
- Removable, fire retardant liners
- Rubberised floor protecting base

Available in UK only:

**9L**  
**PRODUCT CODE**  
0046475

Available in Europe (Excl. UK) only:

**10L**  
**PRODUCT CODE**  
0047035



### 12L Recycling Bin

- Brushed stainless steel
- 12L total capacity
- 1 x 6L green insert for recycling
- 1 x 6L black insert for general waste
- Removable collar
- Concealed bag feature
- 36.5x27.2x19.2cm

**PRODUCT CODE**  
0047718



### 9L Recycling Bin Inserts

- Inserts fit into any 9L round bin
- The green insert can be added to the bin to offer the recycling segregation without the need for both inserts, or a new bin

Available in UK only:

**GREY**  
**PRODUCT CODE**  
0047097

**GREEN**  
**PRODUCT CODE**  
0047098



### 20L Leatherette Recycling Bin

- 20L total capacity
- 1 x 10L green insert for recycling
- 1 x 10L black insert for general waste
- Steel inserts
- Fire retardant PU leatherette
- 43.2x27.3x30.5cm

**PRODUCT CODE**  
0047712



### 10L Double Layer Black Bin

- Steel, black powder coating
- Rubberised floor protecting base
- 23x27cm

**PRODUCT CODE**  
0047328



### 10L Recycling Bin

- 10L capacity
- 2 flows for sorting
- Lid to hide the bags
- Robust galvanised steel
- Rubber protection at the base
- 27.5x20x34cm

Available in Europe (Excl. UK) only:

**PRODUCT CODE**  
0047698



### 8L Swing Top Black Bin

- Black steel swing top bin
- Silver top
- Rubberised floor protecting base

Available in Europe (Excl. UK) only:

**PRODUCT CODE**  
0046114



### Epsom Welcome Tray

- High gloss melamine black finish
- Raised sides to contain spills
- Easy to clean and maintain
- Compatible with any kettle
- 30x39.8x2.6cm

**PRODUCT CODE**

0047452



### Buckingham Standard Welcome Tray

- Solid and durable construction
- Unique tray designed to eliminate the need for saucers
- Easy-to-clean removable drip tray with perforated stainless steel grill
- 3 presentation ABS plastic inserts for portion control and guest selection
- Rubberised feet
- 1 year guarantee
- Compatible with Buckingham 1L Kettle
- 20x46x3.5cm

**LIGHT WOOD**

**PRODUCT CODE**

0044381

**BLACK**

**PRODUCT CODE**

0044323

**DARK WOOD**

**PRODUCT CODE**

0044380



### Kensington Compact Welcome Tray



- Solid and durable construction
- Includes large sliding drawer as discreet storage for all types of beverage sachets
- Easy-to-clean removable drip tray with perforated stainless steel grill
- Rubberised feet
- Black finish
- 1 year guarantee
- Compatible with Kensington 0.6L Kettle
- 20x24.5x6.2cm

**PRODUCT CODE**

0047029

### Aintree Compact Welcome Tray



- Solid and durable construction
- Unique tray designed to eliminate the need for saucers
- Easy-to-clean removable drip tray with perforated stainless steel grill
- 1 presentation ABS insert for portion control guest selection
- Rubberised feet
- Black finish
- 1 year guarantee
- Compatible with Kensington 0.6L Kettle
- 23x23.5x3cm

**PRODUCT CODE**

0047162

### Compact Wooden Welcome Tray



- High quality MDF with ultra strong lacquer finish
- Black brown in colour
- 3 integrated compartments; 2 for sachets and 1 for milk/sugar sticks
- 1 tree planted for every 5 trays sold
- 2 year guarantee
- 6.5x24x4cm

Available in Europe (Excl. UK) only:

**PRODUCT CODE**

0037492

### Large Wooden Hospitality Tray

- Large hospitality tray, space for coffee machine and kettle
- High quality MDF with ultra strong lacquer finish
- Black brown in colour
- 3 integrated compartments; 2 for sachets and 1 for milk/sugar sticks
- 6 integrated capsule compartments
- 1 tree planted for every 5 trays sold
- 2 year guarantee
- 46x37x4cm

Available in Europe (Excl. UK) only:

**PRODUCT CODE**

0047208



### Black Wood Effect Tray



- First grade ABS with wood grain effect
- 4 integrated sachet trays, and 1 spoon tray
- Anti-theft built in kettle base for Malvern or Corsham kettle
- Removable stainless steel perforated tray for easy cleaning
- 46x22.5x3.5cm

**PRODUCT CODE**

0047115

### Richmond Compact Hospitality Tray

- Non-integrated hospitality tray with raised sides
- Richmond compact tray made of Sapele wood
- Black finish
- Compatible with all kettles, Ascot Sachet Holder & Mug Tray and Thame Sachet Holder
- 1 year guarantee
- 42x32x4cm



**PRODUCT CODE**

0042413



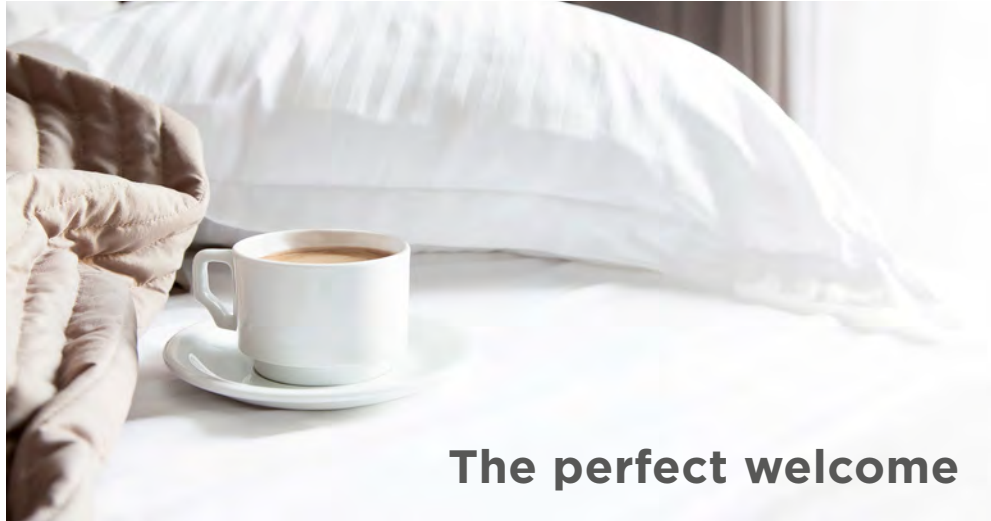
### Lancaster Compact Welcome Tray

- Includes a separate sachet holder for easy replenish of tea and coffee sachets
- Solid and durable construction
- Unique tray designed to eliminate the need for saucers
- Easy-to-clean removable drip tray with perforated stainless steel grill
- 1 presentation ABS insert for portion control and guest selection
- Compatible with Lancaster 1L Kettle
- 1 year guarantee
- 20x35.5x3.1cm

**PRODUCT CODE**

0047028





The perfect welcome

### Buckingham Compact Welcome Tray

- Solid and durable construction
- Unique tray designed to eliminate the need for saucers
- Easy-to-clean removable drip tray with perforated stainless steel grill
- 1 presentation ABS insert for portion control and guest selection
- Rubberised feet
- Compatible with Buckingham 1L Kettle
- 1 year guarantee
- 18x33.5x3cm



**LIGHT WOOD**  
**PRODUCT CODE**  
0044375

**BLACK**  
**PRODUCT CODE**  
0044374

**DARK WOOD**  
**PRODUCT CODE**  
0044373



### Canterbury Compact Tray

- Solid wood construction
- Compact, space-saving design
- Easy-to-clean removable drip tray with perforated stainless steel grill
- Built in sachet holder
- Rubberised feet
- Compatible with Canterbury 1L or 0.6L kettle
- 1 year guarantee
- 23x23x3cm

**BLACK**  
**PRODUCT CODE**  
0047087

**LIGHT WOOD**  
**PRODUCT CODE**  
0047088

**DARK WOOD**  
**PRODUCT CODE**  
0047089



### Canterbury Drawer Tray

- Solid wood construction
- Compact, space-saving design
- Stores ingredients neatly and dust free
- 4 compartments for storing sachets
- Rubberised feet
- Compatible with Canterbury 1L or 0.6L kettle
- 1 year guarantee
- 25x21x6.2cm

**PRODUCT CODE**  
0047090



### Canterbury Standard Tray

- Solid wood construction
- Unique tray designed to eliminate the need for saucers
- Easy-to-clean removable drip tray with perforated stainless steel grill
- 3 built in sachet holders plus spoon tray
- Rubberised feet
- Compatible with Canterbury 1L or 0.6L kettle
- 1 year guarantee
- 41x21x3.5cm

**PRODUCT CODE**  
0047086



### PU Leather Drawer Tray



- Made of highly resistant synthetic leather
- Black finish
- Space-saving and compact
- Stores ingredients neatly and keeps them dust free
- 19.3x28x2.5cm

Available in Europe (Excl. UK) only:

**PRODUCT CODE** 0047077



### PU Leather Tray



- Black finish
- Easy to clean
- Water resistant
- 40x26x3.2cm

Available in Europe (Excl. UK) only:

**PRODUCT CODE** 0046190

### Tray with Drawer



- Made of high quality veneered plywood
- Colour: black brown
- Size: 26.5x19x8.4cm
- Tray only
- 1 tree planted for every 5 trays sold
- Design your own drawer with removable dividers

Available in Europe (Excl. UK) only:

**PRODUCT CODE** 0047207

### Modular Trays

- Made with hard-wearing melamine
- Black finish
- Main tray can accommodate an espresso machine and/or a kettle
- Second tray designed to accommodate an espresso machine
- Main tray dimensions: 32.1x30x3.7cm
- Second tray dimensions: 16.5x30x3.7cm
- Also available in white

Available in Europe (Excl. UK) only:

**MAIN TRAY BLACK**

**PRODUCT CODE** 0046187

**SECOND TRAY BLACK**

**PRODUCT CODE** 0046118

**SECOND TRAY WOOD**

**PRODUCT CODE** 0046084



### Maestro Tray

- Made with hard-wearing melamine
- Black finish
- Integrated sachet holders
- 39.7x20x2.7cm
- Also available in white

Available in Europe (Excl. UK) only:

**PRODUCT CODE** 0046151



### Ascot Sachet Holder

- Made of high gloss melamine
- Black finish
- Internal dividers for portion control
- Easy to clean and maintain
- Heat-resistant up to 140°C
- 12.5x9.5x4cm

**PRODUCT CODE** 0042447



### PU Leather Sachet Holder



- Made of black synthetic leather
- Easy to clean
- Water resistant
- 16.1x8.9x6.3cm

Available in Europe (Excl. UK) only:

PRODUCT CODE 0046146

### Black Melamine Sachet Holder



- Made of hard-wearing gloss melamine
- Black finish
- Water resistant
- 12x7x3cm

Available in Europe (Excl. UK) only:

PRODUCT CODE 0046074

### Thame Sachet Holder



Dishwasher Safe

- Made of hard-wearing gloss melamine
- Black finish
- Large compartments and internal dividers for portion control
- Dishwasher safe
- Heat-resistant up to 140°C
- 15x10x4.5cm

PRODUCT CODE 0042491

### Kingston Sachet Holder



- Made with hard-wearing gloss melamine
- Black finish
- Dishwasher safe
- Generous size to accommodate most sachets
- Heat-resistant up to 140°C
- 20x7.5x5.5cm

PRODUCT CODE 0042415

### Reversible Capsule Holder

- Made with hard-wearing gloss melamine
- Black finish
- 6 holes in one side, 3 on reverse
- 13.4x9.2x1.3cm

Available in Europe (Excl. UK) only: PRODUCT CODE 0046085



## Eco-friendly bamboo preserving the forests

### Cambourne Plus Bamboo Drawer Tray



- Made of eco-friendly first grade bamboo
- Black finish
- Space saving and ultra compact
- Stores ingredients neatly and keeps them dust free
- Easy-to-clean, food grade bamboo
- Designed to fit Corsham or Malvern kettles
- 27.2x19.4x8.5cm

PRODUCT CODE 0047103

### Bamboo Welcome Tray



- Made of eco-friendly first grade bamboo
- Black finish
- Elegant soft-contour design
- Easy-to-clean, food-grade bamboo
- Designed to fit most types of compact espresso machines
- 2 year guarantee
- 50x40x4cm

PRODUCT CODE 0047619

### Tongwell Bamboo Tray



Also available in Natural or Mahogany finish

- Made of eco-friendly, first grade bamboo
- Black finish
- Also available in natural or mahogany finish
- Space saving, compact design
- Easy-to-clean, food grade bamboo
- Designed to fit Corsham or Malvern kettles
- 26x26x3cm

PRODUCT CODE 0047109

### Black Bamboo Condiment Box

- Made of eco-friendly first grade bamboo
- Black finish
- Stores condiments neatly and keeps them dust-free
- Easy-to-clean, food-grade bamboo
- 2-year guarantee
- 19x21x7cm

PRODUCT CODE 0047620



### Compact Espresso Drawer Tray

- Made from eco-friendly first grade bamboo
- Black finish
- Larger drawer tray with 4 compartments
- Designed to fit most types of compact espresso machines
- Easy-to-clean, food-grade bamboo
- 31.5x39x7.5cm

**PRODUCT CODE**

0047618



### PU Leather Condiment Box

- Made of black leatherette with black stitching
- Removable divider for up to six capsules
- Water repellent and easy to clean
- 17x17.5x5.5cm

Available in Europe (Excl. UK) only:

**PRODUCT CODE**

0047695



The perfect pick-me-up  
at your guests' fingertips

## Drinkware accessories

### Wooden Disc Stirrer

- 17cm wooden disc stirrer
- Birchwood FSC® 100% wood
- Biodegradable and compostable

**PRODUCT CODE**

0042325



### Bottle Opener

- Bottle opener and corkscrew
- Small discreet design

**PRODUCT CODE**

BOTTOPENBLK



### White Tissue Coaster

- 9cm plain white tissue coaster
- Wax ply backing
- 7 ply tissue
- Sold in packs of 5,000

**PRODUCT CODE**

0039895



### 9oz Plastic Cup

- Transparent cup
- Individually wrapped for sanitary purposes
- Soft, flexible polypropylene cup is safer for children, no sharp edges

**PRODUCT CODE**

HOLIO08CUPS



### 8oz White Mug

- 8oz / 22.7cl white mug
- Alumina vitrified

**PRODUCT CODE**

0042277



### Plain Stan Caps

- Keep glassware clean and dust-free when not in use
- Sold in packs of 5,000

Available in:

**6cm**

**PRODUCT CODE**  
STANCAPS60MM

**6.9cm**

**PRODUCT CODE**  
STANCAPS69MM

**7.9cm**

**PRODUCT CODE**  
70488STAN







Keep bedding clean  
and organise your  
guests' living space



### Wooden Luggage Rack

- Nylon straps
- Chrome inlays
- Holds up to 50kg
- Folds flat for easy storage
- Dimensions when closed:  
65.5x60x11cm

#### DARK WOOD FINISH

**PRODUCT CODE**  
0047717

#### BLACK WOOD FINISH

**PRODUCT CODE**  
0047092

#### BEECH FINISH

**PRODUCT CODE**  
0042406



### Heavy Duty Wooden Luggage Rack

- 4 high resistance straps
- Holds up to 220kg
- Symmetrical design to avoid wall contact
- Extremely compact when folded (3.5cm)

Available in Europe (Excl. UK) only:

**PRODUCT CODE** 0046142



### Metal Luggage Rack - Chrome

- Tubular steel construction with nylon straps
- Chrome finish
- Integrated wall protector
- Folds flat for easy storage

#### No back

Size: 57x67.8x9cm  
(Holds up to 50kg)

**PRODUCT CODE** 0046493

#### With back

Size: 62x87x10cm  
(Holds up to 50kg)

**PRODUCT CODE** 0042442



### Metal Luggage Rack - Black

- Tubular steel construction with nylon straps
- Black finish
- Integrated wall protector
- Holds up to 50kg
- Folds flat for easy storage
- Plastic capped feet to protect floor surfaces

#### No back

Size: 57x67.8x9cm

**PRODUCT CODE** 0047250

#### With back

Size: 62x87x10cm

**PRODUCT CODE** 0042407



## Laundry Bag



- Non-woven laundry bag
- Black with one colour print
- 75GSM
- 41x54cm

**PRODUCT CODE** 0042422  
Buy To Order - MOQ of 10,000

## Hair Dryer Bag



- Non-woven hair dryer bag
- Black with one colour print
- 75GSM
- 28.5x36cm

**PRODUCT CODE** 0042421  
Stocked in UK only.  
Buy To Order - MOQ of 10,000 for Europe

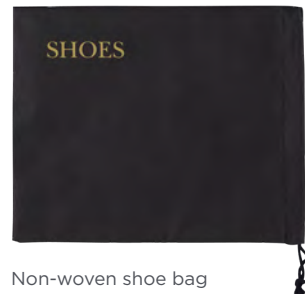
## Hair Dryer Bag



- Non-woven hair dryer bag
- Black fabric hair dryer bag with white print
- 28.5x36.5cm

**PRODUCT CODE** 0034301

## Shoe Bag



- Non-woven shoe bag
- Black with one colour print
- 75GSM
- 28.5x36cm

**PRODUCT CODE** 0042423  
Buy To Order - MOQ of 10,000

PLEASE NOTE: MOQ OF 10,000 APPLIES TO ALL PRODUCTS WITH ADDED LOGO

## Cotton Laundry Bag



- 100% cotton laundry bag
- Drawstring close
- Black or natural colour
- Black or white 'LAUNDRY' embroidery
- 60x40cm

**BLACK**  
**PRODUCT CODE** 0047706

**NATURAL**  
**PRODUCT CODE** 0047708

Buy To Order - MOQ of 5,000

## Paper Laundry Bag



- PEFC recycled paper laundry bag
- Kraft paper
- Instructions provided in English, French & German
- 29x12x45cm

**UK PRODUCT CODE** 0047518  
**EU PRODUCT CODE** 0047517

## Cotton Hair Dryer Bag



- 100% Cotton Hairdryer Bag
- Drawstring close
- Black or natural colour
- Black or white 'HAIRDRYER' embroidery
- 36x28.5cm

**BLACK**  
**PRODUCT CODE** 0047707

**NATURAL**  
**PRODUCT CODE** 0047709

Buy To Order - MOQ of 5,000

## Laundry Bag



- Generic laundry bag - non branded
- Made from recycled plastic.
- The bag is recyclable
- 40x60cm

**PRODUCT CODE** 0035606

### Standard Hook Hangers

Available in:

**LIGHT WOOD WITH CLIPS**

**PRODUCT CODE**

HANG198LHLH

**LIGHT WOOD TROUSER BAR**

**PRODUCT CODE**

HANG198MHLH

**DARK WOOD WITH CLIPS**

**PRODUCT CODE**

HANGD9300DS

**DARK WOOD TROUSER BAR**

**PRODUCT CODE**

HANGD9300DR



### Security Hook Hangers

Available in:

**LIGHT WOOD WITH CLIPS**

**PRODUCT CODE**

HANG198LESH

**LIGHT WOOD TROUSER BAR**

**PRODUCT CODE**

HANG198MESH

**DARK WOOD WITH CLIPS**

**PRODUCT CODE**

HANGDARKLSH

**DARK WOOD TROUSER BAR**

**PRODUCT CODE**

HANGDARKMSH



### Satin Covered Padded Hanger

**PRODUCT CODE**

HANG198PADDED



### Rings for Security Hooks

**PRODUCT CODE**

HANG198RING



### Umbrella

- 69cm umbrella with curved wooden handle
- One colour logo printing available

**BLACK**

**PRODUCT CODE**

0047023



### Clothes Brush

- 38cm black wood
- Leather tie

**PRODUCT CODE**

BRUSHBLKWOOD



### In-Ear Headphones

- Black in-ear headphones
- 3.5mm stereo plug
- 1m cord

**PRODUCT CODE** 050EARPHONE



### Shoe Horn

- 38cm black wood
- Leather tie

**PRODUCT CODE**

SHOEBLKWOOD





### Hookless Shower Curtain



- 'Flex-On' rings pop right over the rod
- Hang up or take down in less than 10 seconds
- No extra hooks needed
- No need to remove the rod
- Water repellent 100% polyester fabric
- Colour: Chevron pattern fabric white
- Machine washable and dryable

**STANDARD 180x196cm** **LARGE 213x196cm**  
**PRODUCT CODE** **PRODUCT CODE**  
 HILTS CURTAIN HILTS CURTAINL

### Silicone Toilet Brush & Holder

- Hygienic silicone bristles
- Flexible silicone toilet brush head
- Free standing or wall mounted
- Anti drip brush design

**PRODUCT CODE** 0047510



### Pedal Bins

- Easy-clean plastic bucket
- Lip for hiding excess bag
- Stainless steel

Available in UK only:

**3L CHROME FINISH**  
**PRODUCT CODE**  
 0046516

**3L MATTE BLACK**  
**PRODUCT CODE**  
 0047330

Available in Europe  
 (Excl. UK) only:

**3L CHROME FINISH**  
**PRODUCT CODE**  
 0047034

**3L MATTE BLACK**  
**PRODUCT CODE**  
 0046088

Easy-clean  
 plastic  
 bucket



### Rubber, Non-Slip Bath Mat

**34x74cm**  
**PRODUCT CODE**  
 0042380

### Bath Mat Storage Bag

**PRODUCT CODE**  
 0047622



### Cube Tissue Box Cover

- Easy to replenish
- Robust ABS plastic construction
- Chrome, black or white finish
- Well concealed base

#### CHROME

**PRODUCT CODE**  
0044333

#### BLACK

**PRODUCT CODE**  
0044332

#### WHITE

**PRODUCT CODE**  
0046487



### PU Black Leather Tissue Box Cover

- Rectangular or square
- Ellipse opening for dispensing tissues
- Velour finish inside
- Magnetic closing lid
- Made of PU leather

**Available in Europe (Excl. UK) only:**

**RECTANGULAR**  
**PRODUCT CODE**  
0046351

**SQUARE**  
**PRODUCT CODE**  
0047663



### Rectangle Tissue Box Cover

- Wall mountable
- Chrome or black finish
- Easy to replenish
- Robust ABS plastic construction
- Fixing pack included
- Fits tissue box up to the size of 23.8x5.8x12.2cm

#### CHROME

**PRODUCT CODE**  
0042411

#### BLACK

**PRODUCT CODE**  
0044334



### Sanitary Bag Cartridge

- Easy to refill
- Can be wall mounted

**Available in:**

**CHROME**  
**PRODUCT CODE**  
SANIBAGCHR



### Sanitary Bag Refill

**PRODUCT CODE**  
SANBAGREFIL



### Battery Free Digital Scales



- Ultra thin tempered glass
- Battery free - uses kinetic push button energy
- Displays weight in kg or lb
- LCD display
- Auto power off
- 180kg capacity
- 28x28cm

**Available in Europe (Excl. UK) only:**

**PRODUCT CODE** 0046307



- 8mm toughened safety glass
- Battery free - uses kinetic push button energy
- Displays weight in kg or lb
- Ultra large LCD display
- Auto power off
- 180kg capacity
- 31x31cm

**Available in UK only:**

**PRODUCT CODE** 0047112

### Helmsley Digital Glass Bathroom Scale

- Digital display
- Slimline glass design
- Imperial and metric weight settings (kg, lb or st)
- Rubber feet
- Max weight 150kg/23st 8lb/300lb
- Includes 1 x 3V d.c. lithium cell battery

**PRODUCT CODE** 0042409



### Winchester Free Standing Mirror

- Chrome finish
- Standard magnification and 5x magnification (double-sided)
- Adjustable height
- 360° rotation
- Stabilising base plate
- 20cm diameter face

**PRODUCT CODE**  
0047038



### Winchester Wall Mounted Mirror

- Chrome or black finish
- Standard magnification and 5x magnification (double-sided)
- Extend, tilt, rotate and swivel into position
- Folds flat to wall when not in use
- Fixings pack included
- 20cm diameter face

**CHROME**  
**PRODUCT CODE**  
0047039

**BLACK**  
**PRODUCT CODE**  
0047095



### Winchester Free Standing Illuminated Mirror

- Chrome finish
- Standard magnification and 5x magnification (double-sided)
- Timer switch with auto shut-off after 4 minutes
- LED illuminated
- Adjustable height
- 360° rotation
- Battery powered - 4x AAA (1.5V) batteries included
- 20cm diameter face

**PRODUCT CODE**  
0044363



### Winchester Wall Mounted Illuminated Mirror

- Chrome or black finish
- Standard magnification and 5x magnification (double-sided)
- Timer switch with auto shut-off after 4 minutes
- LED illuminated
- Extend, tilt, rotate and swivel into position
- Folds flat to wall when not in use
- Battery powered - 4 x AAA (1.5V) batteries included
- 20cm diameter face

**CHROME**  
**PRODUCT CODE**  
0046013

**BLACK**  
**PRODUCT CODE**  
0047094



### Wall Mounted LED Illuminated Mirror

- 3x magnification
- LED light - no electrical connection required
- Automatic switch on/off
- Lithium batteries - 60 month life
- Unique design with a flat arm
- 18cm diameter face

**Available in Europe**  
**(Excl. UK) only:**

**CHROME**  
**PRODUCT CODE**  
0046217



### Wall Mounted Mirror

- Double sided mirror
- Tubular arm
- Standard magnification and 3x magnification
- 360° rotation
- 20cm diameter face

**Available in Europe**  
**(Excl. UK) only:**

**BLACK**  
**PRODUCT CODE**  
0046102

**CHROME**  
**PRODUCT CODE**  
0046207



### Desktop Mirror

- Double sided mirror
- Standard magnification and 3x magnification
- 360° rotation
- 20cm diameter face

**Available in Europe**  
**(Excl. UK) only:**

**BLACK**  
**PRODUCT CODE**  
0046110

**CHROME**  
**PRODUCT CODE**  
0046192



### Square Wall Mounted Mirror

- 3x magnification
- Unique design with a flat arm
- 18cm diameter face

**Available in Europe**  
**(Excl. UK) only:**

**CHROME**  
**PRODUCT CODE**  
0046144





### Bamboo Amenity Tray

- Black bamboo tray
- Rubberised castor feet
- 30x10cm



Available in Europe (Excl. UK) only:

**PRODUCT CODE** MARRBAMBTRAY

### Melamine Amenity Tray

- Modular tray
- Unique design with space for amenity storage
- Water resistant
- 32x15cm



Available in Europe (Excl. UK) only:

**WHITE**

**PRODUCT CODE** 0046100

**BLACK**

**PRODUCT CODE** 0046101

### Amenity Tray

- ABS tray
- Non-slip feet
- 30x15.5cm



Available in UK only:

**WHITE**

**PRODUCT CODE** 0046501

**BLACK**

**PRODUCT CODE** 0046467

### Resin Amenity Jar



- Made of high quality resin
- Rounded design with lid
- Marble look
- Ideal for organising bathroom amenities
- Fits onto matching amenity tray
- Water repellent and easy to clean
- 11x7.5cm

Available in Europe (Excl. UK) only:

**PRODUCT CODE** 0047696

### Resin Amenity Tray



- Made of high quality resin
- Rounded design with marble look
- Water repellent and easy to clean
- 20x10x2.5cm

Available in Europe (Excl. UK) only:

**PRODUCT CODE** 0047697

### Delta Bathroom Set

- High quality resin bathroom set
- Black or white
- Water repellent & durable
- Soap dish 13x9x2.5cm
- Small box with lid 9.52x12cm
- Amenity tray 25x13x2.5cm
- Tissue box cover 12.5x14.6cm



#### SOAP DISH

**PRODUCT CODE** 0042145

#### SMALL BOX WITH LID

**PRODUCT CODE** 0042545

#### AMENITY TRAY

**PRODUCT CODE** 0042146

#### TISSUE BOX COVER

**PRODUCT CODE** 0042144

Buy To Order - MOQ of 100



BEDS, CRIBS &  
ACCESSORIES

04

**Foldable Wooden Crib**

- Made of durable and strong hardwood
- Supplied with 7.5cm foam fire retardant mattress
- Mattress and base stored inside crib when folded
- Supplied with dust cover for clean storage
- Double width heavy duty swivel caster
- 101x67cm. Folds to 24cm

**Available in:****BEECH****PRODUCT CODE**

0037486

**MAHOGANY****PRODUCT CODE**

0046327

**Pinnacle Metal Crib**

- Heavy-duty steel construction
- Easy to assemble and folds flat in seconds
- Powder coated finish for easy cleaning
- Includes a 10cm foam mattress
- 4 oversize casters, 2 locking
- Meets all crib & mattress standards
- 101x71x109cm; Folds to 60x96cm

**PRODUCT CODE**

0042240

**Pinnacle Crib Cover**

- Made of heavy-duty nylon
- Protects the crib from dust, dirt and any potential damage

**PRODUCT CODE**

0042253





### Red Kite™ Sleptight Cot

- Easy to collapse, fold away and transport
- Fully padded top rails to help keep your little one safe within the Sleptight Cot
- Easy view mesh - helping you keep a close eye on your child
- Suitable from birth - great for letting them play around in a safe environment
- Mattress included, for added comfort
- FREE carry bag: Fold it and pack it; take it with you - simple and easy!
- Suitable for babies from birth up to a maximum of 15kg in weight and who are unable to climb out



**PRODUCT CODE**  
0042234

### Snugfresh Celebrity Travel Yard

- Easy folding
- Easily transportable with zippered carry case
- 4 sided breathable mesh
- Supplied with 1.9cm foam mattress
- Removable, washable soft microfibre cover
- Resistant to scuffing and abrasions
- 94x63.5cm



**PRODUCT CODE**  
0042258

### Folding Travel Cot Mattress\*



- 100% Corovin Cover & Foam Filling (breathable, not waterproof)
- Dimensions open: 101x71x5cm
- Dimensions closed: 52x71x10cm

**PRODUCT CODE**  
0042235

\*Fits Red Kite Sleptight Cot, this mattress provides additional comfort over and above the one included with cot.

### Travel Cot Mattress Protector



- 100% brushed cotton top layer
- Waterproof base layer
- Size: 60x120cm
- Material: 42% Cotton, 24% Polyester, 36% TPU
- Elasticated corners to fit your mattress
- Removable washable cover that can be tumble dried on low heat

**PRODUCT CODE**  
0042236

### The 7-Piece Bedding Bale



Contains:

- Cellular blanket x 3, size: 150x100cm
- Flat sheets x 2, size: 150x100cm
- Fitted sheets x 2, size: 130x70cm
- 100% Cotton

**PRODUCT CODE**  
0042237



### Soft and Cosy Spare Blankets



- Pack of 3 x cellular cotton blankets, each measuring 100x150cm
- Wash at 40°C and cool tumble dry
- 100% cotton with Okeo-Tex Accreditation

**PRODUCT CODE**  
0042238

### Upright Rollaway Bed

- Full-size single bed 90x190cm
- Spring mattress, 19cm in depth
- Strong and durable powder coated frame
- FSC® certified wood harvested from sustainable and ethical sources
- Space saving due to bed being stored upright
- Folding legs make it easy to put the bed upright and back down
- Heavy duty wheels to prevent damage to the floor
- 3 year guarantee
- 100% Dutch design
- Dust cover sold separately



Available in Europe (Excl. UK) only:

**PRODUCT CODE** 0037485

#### Dust Cover

**PRODUCT CODE** 0046324

### Folding Rollaway Bed

- Largest extra bed on the market 90x210cm
- Comfortable SG40 foam mattress, 10cm in depth
- Strong and durable powder coated frame
- FSC® certified wood harvested from sustainable and ethical sources
- Space saving due to bed being stored upright
- Easy to fold and unfold due to unique folding system
- Heavy duty wheels to prevent damage to the floor
- Only 90x40x120cm when folded
- 3 year guarantee
- 100% Dutch design
- Dust cover sold separately

Extra  
Spacious



Available in Europe (Excl. UK) only:

**PRODUCT CODE** 0046323

#### Dust Cover

**PRODUCT CODE** 0046325

### Jay-Be Deluxe Single Folding Bed

- Deep sprung 18" mattress with a high density deep spring interior for evenly distributed support
- Layer of luxury lambswool, which improves the fire resistance of the mattress and actively wicks away moisture for temperature regulation
- 100% foam free, breathable rebound e-fibre comfort layers
- Easy to wipe clean, durable powder coat painted steel frame
- Fully automatic folding legs make it easy to open and close
- Heavy duty 360° castors for easy manoeuvrability
- FSC® certified wood harvested from sustainable and ethical sources
- Exceeds British and European safety standards
- 190kg user weight
- Dust cover sold separately



Available in UK only:

**PRODUCT CODE** 0047118

#### Dust Cover

**PRODUCT CODE** 0047117

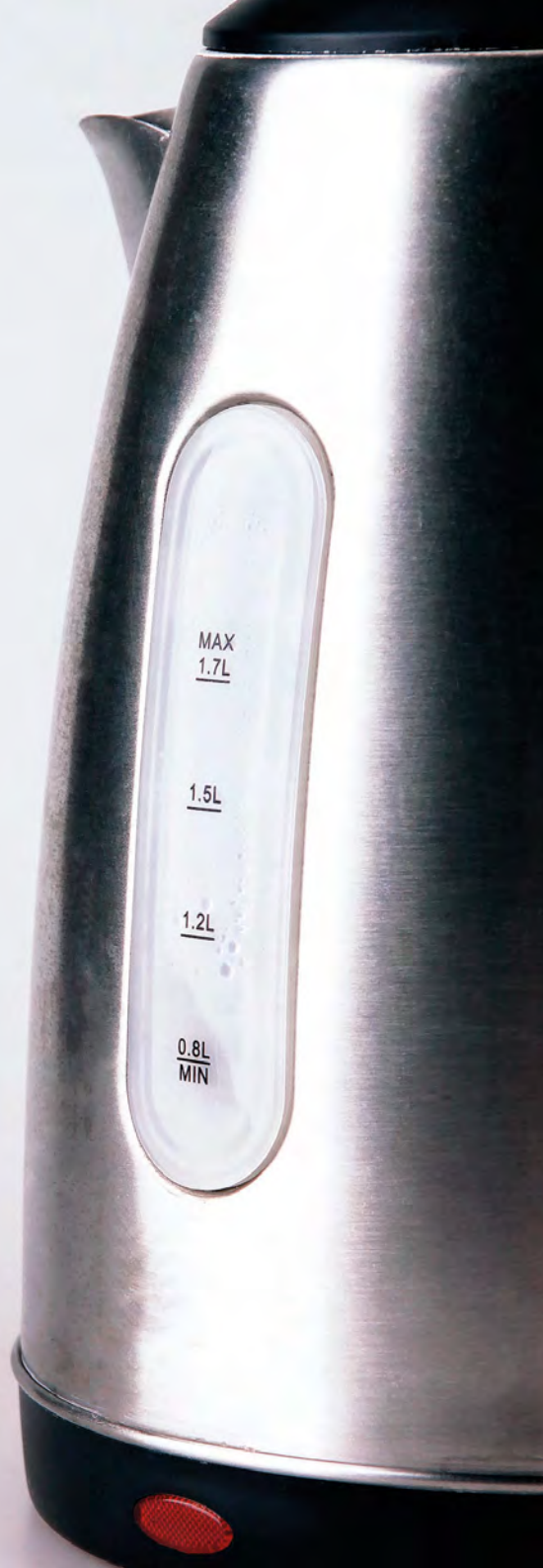
### Jay-Be Contract Upright Rollaway Bed

- Luxury 18cm hand tufted e-Sprung mattress
- Designed to fit through standard doorways
- Easy to store, minimal upright footprint
- Legs act as handles to help when lowering and raising
- Scratch resistant powdered coat finish
- Heavy duty 360° castors for easy manoeuvrability
- FSC® certified wood harvested from sustainable sources
- Exceeds international safety standards
- 190kg user weight



**PRODUCT CODE**  
0047719





### Eton Glass Fronted Minibar

- No compressor or CFCs
- R600a refrigerant (non-ammonia coolant)
- Zero degree peltier cooling
- Silent operation with no vibration
- Refrigerator temp 6 to 8°C
- Interior LED light
- 65 Watt - 220-240V, 50-60Hz
- Insulation: Cylcopentane
- Adjustable shelving
- Adjustable left and right door opening
- Black finish
- Can accomodate a 1L bottle of water or wine
- CE & UKCA certified
- 3 year electrical guarantee



#### 10L

**UK PRODUCT CODE** 0047108

**EU PRODUCT CODE** 0047513

#### 20L

**UK PRODUCT CODE** 0044387

**EU PRODUCT CODE** 0047514

#### 35L

**UK PRODUCT CODE** 0042523UK

**EU PRODUCT CODE** 0042523EU

#### 40L

**UK PRODUCT CODE** 0044390

**EU PRODUCT CODE** 0047515

### Eton Lockable Minibar

- No compressor or CFCs
- R600a refrigerant (non-ammonia coolant)
- Silent operation with no vibration
- Dual cooling technology
- Refrigerator temp 6 to 8°C
- Interior LED light
- 65 Watt - 220-240V, 50-60Hz
- Insulation: Cylcopentane
- Integrated door lock with 2 keys
- Adjustable shelf and door storage systems
- Adjustable left and right door opening
- Black finish
- Can accommodate a 1L bottle of water or wine
- CE & UKCA certified
- 3 year electrical guarantee



#### 20L

**UK PRODUCT CODE** 0044389

**EU PRODUCT CODE** 0047516

#### 35L

**UK PRODUCT CODE** 0042524UK

**EU PRODUCT CODE** 0042524EU

#### 40L

**UK PRODUCT CODE** 0042543

**EU PRODUCT CODE** 0042474EU

### Nespresso Compatible Pod Machine

- Ultra compact, fits most coffee trays
- 0.8L removable tank
- 1400W rated power
- Italian-made pump
- CE certified
- 2 year guarantee
- Dimensions: 23x11.8x30cm

Ergonomic  
& Practical



**PRODUCT CODE** 0042359

Buy to Order - MOQ of 50 units in the UK

### Igenix Filter Coffee Machine

- 1.25L/10 cup capacity coffee jug
- Only 750W, 220-240V, 50-60Hz
- Removable funnel with nylon filter
- External water level gauge
- Anti-drip feature
- Keep warm function
- ON/OFF switch with light indicator
- Black plastic housing
- CE & UKCA certified
- 2 year guarantee



**Available in UK only:**

**PRODUCT CODE** 0047251

Buy to Order - MOQ of 20 units

### Instant Hot Water Machine

- Easy one touch instant boiling water
- 1L removable, refillable tank
- Water boils in 5 seconds
- Highly energy efficient, dispenses 200ml or 300ml
- 2200W rated power
- CE Certified
- 2 year guarantee
- Dimensions: 10.5x24x29.3cm



**PRODUCT CODE** 0047699

Buy to Order - MOQ of 50 units in the UK

The perfect  
pick-me-up  
at your guests'  
fingertips



**Malvern 0.5L Kettle**

- Advanced technology isolation boil dry
- Dual safe – thermostat and latest technology internal fuse
- Water level gauge window
- ECO saves water and energy 800-950W
- Concealed heating element for easy cleaning
- Auto steam switch off
- Auto off power indicator light
- Hinged trigger style locking lid
- Strix controller
- CE & UKCA certified
- 3 year electrical guarantee

**BRUSHED STEEL**  
**PRODUCT CODE**  
0047107

**BLACK**  
**PRODUCT CODE**  
0047106

**Star 0.5L Kettle**

- 360° cordless
- Made of 304 stainless steel
- Water and energy efficient – 1000W
- Automatic shut off
- Boil-dry protection
- Strix controller
- Easy-to-clean concealed heating element
- CE certified
- 2 year guarantee

**Available in Europe**  
**(Excl. UK) only:**

**BRUSHED STEEL**  
**PRODUCT CODE**  
0037493

**BLACK**  
**PRODUCT CODE**  
0037494

**0.6L Plastic Kettle**

- 360° cordless
- Made of durable ABS
- Water and energy efficient – 800W
- Automatic shut off
- Boil-dry protection
- Operation indicator
- CE certified
- 2 year guarantee

**Available in Europe**  
**(Excl. UK) only:**

**WHITE**  
**PRODUCT CODE** 0046163

**BLACK**  
**PRODUCT CODE** 0046164

**Canterbury Kettle**

- 220-240V, 1000W
- Strix controlled with auto switch off boil-dry protection
- Concealed element
- 360° base
- Push button hinged lid
- Cord tidy base
- Easy to clean and open
- Large opening for easy cleaning
- CE & UKCA certified
- 3 year electrical guarantee

**0.6L BRUSHED STEEL**  
**UK PRODUCT CODE** 0047016  
**EU PRODUCT CODE** 0047155

**0.6L BLACK**  
**UK PRODUCT CODE** 0047502  
**EU PRODUCT CODE** 0047504



**1L BRUSHED STEEL**  
**UK PRODUCT CODE** 0047017  
**EU PRODUCT CODE** 0047156

**1L BLACK**  
**UK PRODUCT CODE** 0047503  
**EU PRODUCT CODE** 0047505

**Kensington 0.6L Kettle**

- Brushed steel finish
- 220-240V, 1000W
- Strix controlled with auto switch off boil-dry protection
- Eco-friendly 0.6L capacity to avoid over filling and over boiling
- Concealed element
- 360° base
- Push button hinged lid
- Cord tidy base
- Easy to clean and open
- CE & UKCA certified
- 3 year electrical guarantee

**UK PRODUCT CODE** 0044342  
**EU PRODUCT CODE** 0044343

**0.8L Kettle**

- 360° cordless
- Made of stainless steel
- 1250W
- Automatic shut off
- Boil-dry protection
- Anti limescale filter
- Water level gauge
- Operation indicator
- CE certified
- 2 year guarantee

**Available in Europe**  
**(Excl. UK) only:**

**STAINLESS STEEL**  
**PRODUCT CODE**  
0046213

**BRUSHED STEEL**  
**PRODUCT CODE**  
0046214



**Lancaster 1L Kettle**

- Power 220-240V, 1250-1500W
- Boil dry protection with auto switch off
- Concealed element
- Power indicator light
- 360° cordless operation
- Hinged lid with 'trigger' open
- Water level gauge
- Removable filter (washable)
- Integrated cord tidy
- Hand contoured grip handle
- Non-drip spout
- Thermal control
- RoHS compliant
- CE & UKCA certified
- 3 year electrical guarantee

**BLACK**

**UK PRODUCT CODE** 0047249  
**EU PRODUCT CODE** 0047507

**WHITE**

**UK PRODUCT CODE** 0047040  
**EU PRODUCT CODE** 0047146

**Buckingham 1L Kettle**

- Black and chrome finish
- 220-240V, 1250-1500W
- Boil dry protection with auto switch off
- Concealed element
- Power indicator light
- 360° cordless operation
- Hinged lid with 'trigger' open
- Water level gauge
- Removable filter (washable)
- Integrated cord tidy
- Hand contoured grip handle
- Non-drip spout
- Thermal control
- RoHS compliant
- CE & UKCA certified
- 3 year electrical guarantee



**UK PRODUCT CODE** 0042431  
**EU PRODUCT CODE** 0047148

**Corsham 1L Kettle**

- Advanced technology isolation boil dry
- Dual safe – thermostat and latest technology internal fuse
- Water level gauge window
- Energy efficient 800-950W
- Concealed heating element for easy cleaning
- Auto steam switch off
- Auto off power indicator light
- Hinged trigger style locking lid
- Strix controller
- CE & UKCA certified
- 3 year electrical guarantee

**BRUSHED STEEL**

**PRODUCT CODE** 0047105

**BLACK**

**PRODUCT CODE** 0047104

**Stylish essentials**

High-performance hair dryers to add a touch of luxury to your guest's stay.

These hair dryers are not to be used in bathrooms or wet areas.

**Dalton 1600W Hair Dryer**

- Rubberised black handle with chrome detail
- Ergonomically designed handle
- Trigger activated
- 2 heat settings
- Cool blow feature
- Electrical insulated class 2
- 1600W max power
- 220-240V - 50Hz
- Cable length: 190cm (uncoiled), 80cm (coiled)
- CE & UKCA certified
- 3 year electrical guarantee

**UK PRODUCT CODE** 0044330  
**EU PRODUCT CODE** 0044331

**1600W Hair Dryer**

- Hotel safety lighttouch technology – turns on when picked up
- 2 speed / 3 heat settings
- Ionising technology for fast and efficient drying
- Removable filter and diffuser
- Stretch cord cable, max 2m
- CE certified
- 2 year guarantee

**Available in Europe (Excl. UK) only:**

**PRODUCT CODE** 0046227



**1800W Hair Dryer**

- Matte finish
- 3 heat settings / 2 speeds
- Cold shot button
- Removable nozzle
- Over-heating protection
- Cable Length 1.8m
- 220-240V, 50/60Hz
- CE & UKCA certified
- 3 year electrical guarantee

**UK PRODUCT CODE** 0044328

**EU PRODUCT CODE** 0044329

**1800W Ionic Hair Dryer**

- 1800W powerful drying
- Ionic technology for fast and effective drying
- 2 speed / 3 heat settings
- Trigger activated - extra safe and eco-friendly
- Removable filter for easy cleaning
- CE & UKCA certified
- 3 year electrical guarantee

**UK PRODUCT CODE** 0046977

**EU PRODUCT CODE** 0047157

**1800 - 2000W Ionic Hairdryer**

- 230V - 50/60 Hz
- 3 heat settings / 2 speeds
- Airflow: 80 and 100 m3/h
- 3 temperatures (including coldshot)
- Delivered with a straight cord (250cm)
- CE certified
- 2 year guarantee

**Available in Europe (Excl. UK) only:**

**BLACK**

**PRODUCT CODE** 0037684

**2000W Soft Touch Ionic Hair Dryer**

- Hotel safety ON/OFF press switch saves energy and safe
- Dual safe - thermostat and latest technology internal fuse
- Ceramic ionic for a smooth, shiny result and a luxurious, soft touch
- Powerful 2000W DC motor
- 2 speed / 2 heat and cool settings
- Removable filter cover and safety mesh blade cover
- Safety thermostat over-heating circuit protection
- Ergonomic non-slip contoured handle
- Insulated motor to reduce noise
- Built in hanging loop
- CE & UKCA certified
- 3 year electrical guarantee

**PRODUCT CODE** 0047110

**2000W Folding Hair Dryer**

- 2000W max power
- Power supply 220-240V - 50 Hz
- Matte black handle with chrome detail
- Ergonomically designed handle
- 2 speed settings / 3 heat settings
- Cool blow feature
- Comes complete with concentrator for precise drying and styling
- Zigzag heater
- Removable end cap for easy cleaning
- Over heating protection device
- CE & UKCA certified
- 3 year electrical guarantee

**UK PRODUCT CODE** 0044314

**EU PRODUCT CODE** 0044315

**Hair Dryer Bag**

- Non-woven hair dryer bag
- Black fabric hair dryer bag with white print
- 28.5x36.5cm

**PRODUCT CODE** 0034301

**Hair Dryer Holder Ring**

**Smart Storage**

- Wall mountable
- Concealed fixings (supplied)
- Rigid and durable construction

**PRODUCT CODE** 0042437

### Sherwood 1200W Dry Iron

- Motion sensitive auto-off cuts heat in 30 seconds if left unattended on soleplate and in 8 minutes on heel
- Non-stick soleplate
- Indicator and cut out operating light
- Black casing
- 220-240V AC, 1200W
- CE & UKCA certified
- 3 year electrical guarantee

#### BLACK

UK PRODUCT CODE 0046006UK

EU PRODUCT CODE 0046007EU



### Sherwood 1200W Steam Iron

- Motion sensitive auto-off cuts heat in 30 seconds if left unattended on soleplate and in 8 minutes on heel
- Non-stick stainless steel soleplate
- Indicator and cut out operating light
- 145ml capacity tank
- Filling cup included
- Vertical steam, 70g of steam and water spray
- 220-240V AC, 1200W
- CE & UKCA certified
- 3 year electrical guarantee



#### BLACK

UK PRODUCT CODE 0044359

EU PRODUCT CODE 0044360

### 1600W Steam Iron

- Motion sensitive auto-off cut in horizontal and vertical positions. 30 secs and 5 minutes
- Non-stick soleplate
- Adjustable temperature dial
- Green and red indicator light
- Fusion anti-leak tank and special anti-drip feature
- Self cleaning function
- Steam and spray functions
- 220-240V, 2000W
- CE & UKCA certified
- 3 year electrical guarantee



Available in:

BLACK

PRODUCT CODE 0047100

WHITE

PRODUCT CODE 0047101

## Sturdy and reliable irons & accessories for convenient and easy room storage

### Sherwood 2000W Steam Iron

- Motion sensitive auto-off cuts heat in 30 seconds if left unattended on soleplate and in 8 minutes on heel
- 2000W for quick heat up
- Non-stick stainless steel soleplate
- 330ml capacity tank - filling cup included
- Vertical steam and shot of steam (34g/min) for faster crease removal
- Iron temperature range of 65-230°
- Easy to operate fabric/temperature dial
- Self cleaning function to help maintain the performance and life span of the iron
- Dual LED lights to indicate if iron is turned on or off
- Precision tip enables you to reach into the trickiest areas of your clothes
- Black/grey casing
- 3m supply cord
- 220-240V AC, 50Hz
- CE & UKCA certified
- 3 year guarantee

Rubber handle  
for easy grip



UK PRODUCT CODE 0044361

EU PRODUCT CODE 0044362

### Sherwood Holder for Iron and Ironing Board

- Heat resistant iron resting plate
- Wall mount to wall or inside of a wardrobe
- Concealed fixings (supplied)
- Rigid and durable construction
- Chrome finish iron retaining bar and ironing board holder
- Iron board holder accommodates most boards
- Designed to fit Sherwood 1200W and 2000W irons only

HOLDER FOR 1200W IRON  
PRODUCT CODE 0047352

HOLDER FOR 2000W IRON  
PRODUCT CODE 0047353





### 2 in 1 Steamer & Iron



- Double layer ceramic soleplate
- Continuous steam action for vertical steam ironing
- Horizontal dry ironing
- Safety auto shut off after 5 minutes
- 250cm extra long cable
- 220-240V, 1950W
- CE & UKCA certified
- 3 year electrical guarantee

**PRODUCT CODE** 0047714

### Handheld Garment Steamer



- Non stick stainless steel plate
- Trigger activated steam
- 270ml removable water tank
- 1500W
- CE & UKCA certified
- 3 year electrical guarantee

**PRODUCT CODE** 0047713

### Sherwood Holder for Ironing Board



- Wall mount to wall or inside of wardrobe
- Concealed fixings (supplied)
- Rigid and durable construction
- Accommodates most boards
- Made of black ABS plastic with chrome hook
- Distance between hooks - 35mm

**PRODUCT CODE** 0042405

### Ironing Board Hanger



- Metal hanger for Oxford & Berkshire ironing boards
- Provides a simple wardrobe storage solution
- Supplied with fittings

**PRODUCT CODE** 0047511

### Cambridge Compact Ironing Centre Steam Iron Black 1200W

- Wall mounted
- Space saving
- Perfect for smaller hotel rooms

Dimensions:

**Ironing area:** 60x27cm

**Open:** 94x36x74cm

**Closed:** 94x36x15cm

**Cord Length:**

Iron to box cable: 120cm

Security box to plug: 200cm

**UK PRODUCT CODE** 0044326

**EU PRODUCT CODE** 0044327

Space Saving Solution



### Style Ironing Board

- Compact design
- Comes equipped with wall hook - easy storage
- Available in white or black
- Ironing surface 114 x 38cm
- 120.5x39x85cm

**Available in:**

**LIGHT GREY**

**PRODUCT CODE**  
SGSEIRNBOARD

**Available in Europe (Excl. UK) only:**

**BLACK**

**PRODUCT CODE**  
0040125

### Replacement Cover

**Available in:**

**LIGHT GREY**

**PRODUCT CODE**  
SBBOARDCOVER



### Oxford Ironing Centre

- Lightweight
- Anti-theft iron
- Foam backed aluminised cover
- Drawstring ironing board cover
- Steam flow metal mesh board
- Heat resistant rotating iron holster
- 2 quick release levers
- Durable powder coated black finish
- Cord tidy and storage hook
- Rubber-tipped feet
- 7 height positions
- Premium Ironing Centre available with Sherwood 2000W Steam Iron (black)
- Standard Ironing Centre available with Sherwood 1200W Dry or Steam Iron (black)



7 height  
positions

### Oxford Standard Ironing Centre

**DRY IRON, LIGHT GREY COVER**

**PRODUCT CODE** 0046004UK

**DRY IRON, DARK GREY COVER**

**PRODUCT CODE** 0047042

**STEAM IRON, LIGHT GREY COVER**

**UK PRODUCT CODE** 0044353

**EU PRODUCT CODE** 0044354

**STEAM IRON, DARK GREY COVER**

**UK PRODUCT CODE** 0044355

**EU PRODUCT CODE** 0044356

### Oxford Premium Ironing Centre

**LIGHT GREY COVER**

**PRODUCT CODE**

0047041

**DARK GREY COVER**

**PRODUCT CODE**

0047043

### Oxford Standard Ironing Board

**DARK GREY COVER**

**PRODUCT CODE**

0044357

**LIGHT GREY COVER**

**PRODUCT CODE**

0044358



### Replacement Covers

**ALUMINISED, GREY**

**PRODUCT CODE** 0043988

### Berkshire Compact Ironing Centre

- Lightweight
- Foam backed aluminium cover
- Steam flow metal mesh board
- Deckchair mechanism
- Durable powder coated finish
- Plastic-tipped feet
- 1 height position
- Rear hook for wall hanging
- Grey legs
- Compact Ironing Centre supplied with Sherwood 1200W Steam Iron

Dimensions:

**Ironing area:** 81.5x34cm

**Height position:** 75.5cm

**STEAM IRON, LIGHT GREY COVER**

**UK PRODUCT CODE** 0044317

**EU PRODUCT CODE** 0044318



### Berkshire Compact Ironing Board

Dimensions:

**Ironing area:** 89.5x34cm

**Height position:** 75.5cm

**PRODUCT CODE**

0047512

### Replacement Cover

**PRODUCT CODE**

0042591

Deckchair  
Mechanism



**GOOD TO KNOW:** All our ironing boards are lightweight with an easy folding mechanism and rear hooks for hanging, providing an ideal solution for tidy and efficient storage.

**CubieDuo**

- Simple single day alarm clock
- Qi wireless charging - compliant with Samsung 10W (fast charge) and Apple 7.5W
- 2 USB-A charging ports
- Surge protection
- Right angle pass-through plug
- USB optimised for tablet charging
- Auto-update for daylight saving time
- Display dimmer - 3 levels and off
- Security C-Clamp included
- ETL listed to UL standards
- Passed UL spill test
- CE & UKCA certified
- 1 year guarantee
- Dimensions: 14.9x14.9x5.1cm
- Available in 110V or 220V power with an EU or UK power cord

**UK PLUG****PRODUCT CODE**

0040043

**CubieDuo+**

- Combination bluetooth speaker, wireless charging and alarm
- Simple single day alarm clock
- Qi wireless charging - compliant with Samsung 10W (fast charge) and Apple 7.5W
- 2 USB-A charging ports
- Surge protection
- Right angle pass-through plug
- USB optimised for tablet charging
- Auto-update for daylight saving time
- Display dimmer - 3 levels and off
- Security C-Clamp included
- ETL listed to UL standards
- Passed UL spill test
- CE & UKCA certified
- 1 year guarantee
- Dimensions: 14.9x14.9x5.1cm
- Available in 110V or 220V power with an EU or UK power cord

**UK PLUG****PRODUCT CODE**

0047045

**EU PLUG****PRODUCT CODE**

0047049

**CubieWink**

- Simple single day alarm clock
- 2 USB charging ports
- Auto-update for daylight saving time
- Display dimmer - 3 levels and off
- Security C-Clamp included
- Battery backup included (2 AAA)
- ETL listed (Meets strict UL standards)
- Passed UL spill test
- CE & UKCA certified
- 1 year guarantee
- 10.2x10.2x4.4cm

**UK PLUG****PRODUCT CODE**

0037343

**EU PLUG****PRODUCT CODE**

0047605

**CubieBlue XB**

- Combination Bluetooth speaker, power and alarm
- Bluetooth music play through
- Simple single day alarm clock
- 1 220V UK & 1 EU socket
- 2 USB-A charging ports
- USB optimised for tablet charging
- Surge protection
- Auto-update for daylight saving time
- Display dimmer - 3 levels and off
- Security C-clamp included
- Safety tested
- Passed spill test
- CE & UKCA certified
- 1 year guarantee
- Dimensions: 12.1x12.1x11.4cm

**UK PLUG****PRODUCT CODE**

0047044

**CubieBlue**

- Combination Bluetooth speaker, power and alarm
- Bluetooth music play through
- Simple single day alarm clock
- 2 220V UK/EU sockets
- 2 USB-A charging ports
- 1 USB-C charging port
- USB optimised for tablet charging
- Surge protection
- Auto-update for daylight saving time
- Display dimmer - 3 levels and off
- Security C-clamp included
- Safety tested
- Passed spill test
- CE & UKCA certified
- 1 year guarantee
- Dimensions: 12.1x12.1x11.4cm

**UK PLUG****PRODUCT CODE**

0036154

**EU PLUG****PRODUCT CODE**

0036156

**CubieTime**

- Simple single day alarm clock
- 2 USB-A charging ports
- 1 USB-C charging port
- Auto-update for daylight saving time
- Display dimmer - 3 levels and off
- Security C-Clamp included
- Battery backup included (2AAA)
- ETL listed (meets strict UL standards)
- Passed spill test
- CE & UKCA certified
- 1 year guarantee
- Dimensions: 12.1x12.1x5.7cm

**UK PLUG****PRODUCT CODE**

0036153

**EU PLUG****PRODUCT CODE**

0036155



**CubieMod Wireless**

- Flush mount, in furniture power
- Qi wireless charging pad up to 10W
- 1 power outlet
- 1 USB-A charging port
- 1 USB-C charging port
- Surge protection
- Right angle flat plug
- Mounting hardware included
- Installation template provided
- ETL listed
- Includes snap-on decorative faceplate
- Dimensions: 16.8x7.5x5.8cm

**UK PRODUCT CODE** 0047701

**EU PRODUCT CODE** 0047702

**CubieMod**

- Flush mount, in furniture power
- 2 EU power outlets
- 1 USB-A charging port
- 1 USB-C charging port
- Surge protection
- Right angle flat plug
- Mounting hardware included
- Installation template provided
- ETL listed
- Includes snap-on decorative faceplate
- Dimensions: 16.8x7.5x5.8cm

**UK PRODUCT CODE** 0047703

**EU PRODUCT CODE** 0047704

**CubieMod Box**

- Box only
- Compatible with all the CubieMod 2.0 products
- 16.8x7.9x6.6cm

**PRODUCT CODE** 0047700

**CubieDash Bracket**

- Bracket for CubieMod Box units
- Bracket fastens to the side of the desktop

**PRODUCT CODE** 0047705



FURNITURE,  
FIXTURES &  
EQUIPMENT

06



### Whitehall Digital Compact Safe

- Black powder coated body
- Fixing screws supplied
- Carpet-floored interior
- 4 x AA batteries included
- 1 x back up keys
- 3-6 figure guest code
- 6-digit manager code
- Full operating instructions
- Spring loaded door
- Internal LED light
- Suitable for most laptops up to 14"
- CE & UKCA certified
- Internal dimensions: 41.5x17.8x27cm
- Aperture: 36x13.3cm (not inc. hinge)



PRODUCT CODE 0042428

### Mayfair Top Opening Digital Safe



- Electronic locking mechanism with hydraulic assisted door
- Compatible with Computerised Emergency Unit (CEU) can be bought separately
- User passwords for guests to open
- Master password available with CEU device (sold separately)
- Password entry instructions on the door
- Back up power pack
- 2 x back-up keys / 4 x AA batteries
- Carpet-floored interior
- Interior LED lights to see contents
- Solid steel body / Solid steel locking bolts
- This safe will fit laptop size up to 15"
- Black finish
- CE & UKCA certified
- Includes full operating instructions
- Outer dimensions: 40x35x13cm

#### PRODUCT CODE

0047093

### Westminster Digital Laptop Safe



- Electronic locking mechanism with spring loaded door
- Compatible with Computerised Emergency Unit (CEU) can be bought separately
- User passwords for guests to open
- Master password available with CEU device (sold separately)
- Password entry instructions on the door
- Back up power pack
- 2 x back-up keys / 4 x AA batteries
- Carpet-floored interior
- Interior LED lights to see contents
- Solid steel body / Solid steel locking bolts
- This safe will fit laptop size up to 15"
- Black finish
- CE & UKCA certified
- Includes full operating instructions
- Internal dimensions: 42x18x32cm
- Outer dimensions: 43x37x19.5cm

#### PRODUCT CODE

0042427



- Sets lamp
- Includes:
  - Cable from CEU to safe
  - Cable from CEU to computer
  - 4 x AA batteries

PRODUCT CODE 0042493

### Computerised Emergency Unit (CEU)

- Opens Westminster and Mayfair Digital Safes
- Synchronised Digital Safe Clock
- Reads safe records
- Holds 125 records of passcode
- Sets Digital Safe's master passcode

### Sturdy Highchair



- Made from durable high density plastic
- Microban protection from bacteria growth
- Stackable
- Easy to clean
- Child secured by one piece T-bar and 3 point harness
- Fits under table without tray
- Meets all European safety standards
- 60x59x76cm

#### PRODUCT CODE

0047355

### Sturdy Highchair Tray

- Made from durable high density plastic
- Microban protection from bacteria growth
- 47x29x8.3cm

#### PRODUCT CODE

0047354



### Neatseat Wooden Highchair



- Solid hardwood feeding chair
- EZ clean adjustable harness
- Wide tip-free feet
- Stackable up to four units high
- 5 year warranty
- 52.1x52.1x76.2cm

Available in Europe (Excl. UK) only:

#### PRODUCT CODE

0047694

### Baby Changing Station

- Made from durable high density plastic
- Large, deep bed with adjustable safety straps
- Space efficient
- Meets all global safety standards
- 54.6x10.2x45cm

#### PRODUCT CODE

0047356



**Birdcage Luggage Trolley**

- Brushed stainless steel luggage trolley
- Hanger rail
- 4 sturdy wheels; 2 swivelling & 2 fixed
- Carpeted loading base and protective bumpers
- Supports up to 250kg
- 113x62x191cm

Available in Europe (Excl. UK) only:

**PRODUCT CODE**  
0047691

**Flat Luggage Trolley**

- Brushed stainless steel luggage trolley
- 4 sturdy wheels; 2 swivelling & 2 fixed
- Carpeted loading base and protective bumper all round
- Supports up to 100kg
- 113x61.5x98cm

Available in Europe (Excl. UK) only:

**PRODUCT CODE**  
0047692

**Birdcage Luggage Trolley**

- Brushed stainless steel luggage trolley
- Hanger rail
- 4 solid and durable wheels
- Carpeted loading base and protective bumpers
- Supports up to 200kg
- 105x61x190cm

Available in UK only:

**PRODUCT CODE**  
0047286

**Luggage Cart**

- Gold stainless steel luggage cart
- Foldable utility space of 45cm
- 2 sturdy wheels
- Item delivered fully assembled
- Supports up to 50kg
- 61x70.5x121cm

Available in Europe  
(Excl. UK) only:

**PRODUCT CODE**  
0047693



### Gym Wipes Stainless Steel Stand



- Made of heavy duty, powder-coated steel
- Smudge resistant glazed finish
- Front door with magnetic closure
- Equipped with internal waste bin and extra storage shelf
- Ergonomic height
- ADA Compliant
- Supplied with empty bucket for wipe storage
- 42.5x46.3x101cm

**PRODUCT CODE** 0047348

### Gym Wipes Black Stand



- Made of heavy duty, powder-coated steel
- Front door with magnetic closure
- Equipped with internal waste bin and extra storage shelf
- Ergonomic height
- ADA Compliant
- Supplied with empty bucket for wipe storage
- 41.3x41.3x134cm

**PRODUCT CODE** 0047347

### Replacement Bucket

- Empty bucket for gym wipe stands
- Designed to protect wipes from drying out
- Stackable
- Dispenses various wipes, compatible with all 2XL stands
- 31x31x37cm

**PRODUCT CODE**  
0047350



### Gym Wipe Wall Dispenser

- Touchless wall mounted wipe dispenser
- Self-threading design reducing maintenance
- ADA Compliant
- 28x25x32cm

**PRODUCT CODE**  
0047349



### Force Disinfecting Wipes



- High-quality disposable disinfectant wipes in canister
- Made from extra thick substrate
- Tested and approved to meet EN Standard
- Kills germs in 2 minutes
- Reduces cross-contamination on hard, non-porous surfaces

**UK PRODUCT CODE** 0047656  
**EU PRODUCT CODE** 0047069

### GymWipes+



- High-quality disposable disinfectant wipes
- Refill pack for stands and dispensers
- Made from extra thick substrate
- Tested and approved to meet EN Standard
- Kills germs in 2 minutes
- Reduces cross-contamination on hard, non-porous surfaces
- Fits in all stands and dispensers
- Towelette size: 20x18cm, Refill size: 25x23x58cm

**UK PRODUCT CODE** 0047654  
**EU PRODUCT CODE** 0047655





**Rubbermaid X-CART  
Black Bag 150L**



- This X-CART Black Bag for bulk handling is ideal for hotels, restaurants, hospitals, care homes or anywhere food, drink, linen or any goods may need to be transported
- Size: 39x56.9x69.3cm
- Bag only

**PRODUCT CODE** 0039746

**Rubbermaid X-CART  
Trolley Frame 150L**



- This X-CART Trolley Frame for bulk handling is ideal for hotels, restaurants, hospitals, care homes or anywhere food, drink, linen or any goods may need to be transported
- Size: 51.6x61.3x83.9cm
- Frame only

**PRODUCT CODE** 0039745

**Rubbermaid X-CART  
Trolley Frame 300L**



- This X-CART Trolley Frame for bulk handling is ideal for hotels, restaurants, hospitals, care homes or anywhere food, drink, linen or any goods may need to be transported
- Size: 88.9x61.3x83.9cm
- Frame only

**PRODUCT CODE** 0039743

**Rubbermaid X-CART  
Black Bag 300L**



- This X-CART Double Black Bag for bulk handling is ideal for hotels, restaurants, hospitals, care homes or anywhere food, drink, linen or any goods may need to be transported
- Size: 78x56.9x69.3cm
- Bag only

**PRODUCT CODE** 0039744

### Rubbermaid Medium Housekeeping Cart



- The medium sized cart is a complete system solution for housekeeping
- Perfect for servicing 8-12 rooms
- Impact absorbing and non-marring bumpers are designed to reduce wall damage
- Fully-rounded, user-friendly handles are easy to grip and assist manoeuvrability

**PRODUCT CODE** 0046850

### Rubbermaid Quick Cart for Housekeeping

- A time-saving, mobile cleaning solution

**Available in:**

**Large**  
41.9x36.3x63.5cm  
**PRODUCT CODE**  
0042343

**Medium**  
41.9x36.3x53.3cm  
**PRODUCT CODE**  
0042344

**Small**  
41.9x36.3x43.2cm  
**PRODUCT CODE**  
0042345



Time Saving

All Rubbermaid carts are buy-to-order

### Rubbermaid Large Housekeeping Cart



- The full size cart is a complete system solution for housekeeping, with optional double bag collection and adjustable shelves
- Perfect for servicing 12-16 rooms
- The double bag capacity allows for multiple collection streams such as linen and waste
- Adjustable middle shelf to accommodate storage needs
- Impact absorbing and non-marring bumpers are designed to reduce wall damage
- Fully-rounded, user-friendly handles are easy to grip and assist manoeuvrability

**PRODUCT CODE**  
0047054

### Side-Loading Linen Bag

- The mesh fabric linen bag increases the capacity for clean linen without the need for a larger cart
- Side loading makes the linen easy to reach and to access
- Coated fabric makes it easy to wipe down
- Mesh sides promote air flow and enables users to see when they are running low



**PRODUCT CODE**  
0047096

### Utility Cart



- Smooth, easy to clean shelves
- Molded shelves preventing rust, dent, chip, or peel
- Ergonomic handles
- Four non-marking, quiet, swivel castors
- Supports up to 90kg
- 73.5x49x38cm

**PRODUCT CODE**  
0047344

### 9-Pocket Organiser for Housekeeping Cart

- This 9 pocket organiser has been designed to increase productivity by keeping the housekeeping cart organised during use
- Easy install using loops - clips onto any Rubbermaid housekeeping cart

**PRODUCT CODE**  
0046973

Holds a wide variety of cleaning tools and supplies



### Janitor Cart with Bag



- Made of durable polypropylene
- Supplied with 92L zippered bag
- Front platform fits various buckets and containers
- Two fitted and two swivel castors
- 11 tool hooks
- 55x117x97.5cm

**PRODUCT CODE**  
0046661

## Make the right impression

with the finer details



### 2-Ply White Cocktail Napkin

- FSC® certified 100% recycled paper
- Recyclable
- Biodegradable and compostable

#### Available in:

#### 25cm

#### PRODUCT CODE

HIL102PNAPK

#### 33cm

#### PRODUCT CODE

HIL132PNAPK



### 40cm 3-Ply White Napkin

- Pre-folded for easy layout
- FSC® certified mix 70%
- Recyclable
- Biodegradable and compostable

#### PRODUCT CODE

RF-163P



### 40cm Air Laid 8 Fold White Breakfast Napkin

- FSC® certified mix 70%
- Biodegradable
- Compostable EN13432

#### PRODUCT CODE

HILPSOFTWNAPK

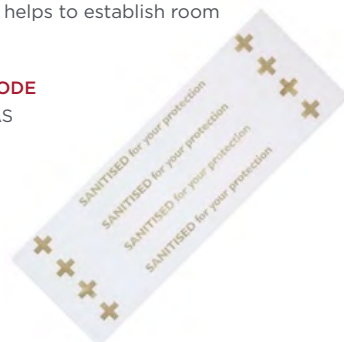


### Toilet Seat Hygiene Band

- Present your restroom as hygienic and sanitised
- Non-branded, disposable toilet seat band that helps to establish room readiness

#### PRODUCT CODE

GENE187PLAS



### Force Disinfecting Wipes



- High-quality disposable disinfectant wipes in canister
- Made from extra thick substrate
- Tested and approved to meet EN Standard
- Kills germs in 2 minutes
- Reduces cross-contamination on hard, non-porous surfaces

UK PRODUCT CODE 0047656

EU PRODUCT CODE 0047069

### GymWipes+



- High-quality disposable disinfectant wipes
- Refill pack for stands and dispensers
- Made from extra thick substrate
- Tested and approved to meet EN Standard
- Kills germs in 2 minutes
- Reduces cross-contamination on hard, non-porous surfaces
- Fits in all stands and dispensers
- Towelette size: 20x18cm, Refill size: 25x23x58cm

UK PRODUCT CODE 0047654

EU PRODUCT CODE 0047655



CHILDREN'S  
PRODUCTS

08

## Children's Slipper

- 5mm EVA bottom sole, 3mm sponge cotton velour upper sole
- 365 gram paper card
- 3mm sponge polar fleece inner shoe bridge

Available in the following sizes:

**24cm****PRODUCT CODE**

0037359

**20cm****PRODUCT CODE**

0037360



## Child's Farm Child Amenity Kit

Multi-award-winning and proudly British, Child's Farm celebrate all things natural and naturally derived to soothe and moisturise the delicate and sensitive skin of newborns, babies and children.

**Contains:**

- 30ml Hair & Body Wash (Organic Sweet Orange)
- 30ml 3 in 1 Swim (Strawberry & Organic Mint)
- 30ml Moisturiser (Grapefruit & Organic Tea Tree)

**PRODUCT CODE**

0046868

Dermatologist and paediatrician approved as suitable for sensitive skin and safe for those who may be prone to eczema.



## Animal Activity Pack

Includes two designs, 30 of each design:

- A3 activity booklet, folded to A5
- Door hanger
- Pop out characters and accessories
- Family game
- Jigsaw puzzle
- Glasses
- 3 triangular crayons

**PRODUCT CODE**

0047710



### Organic Cotton Shawl Collar Bathrobe

- 100% organic cotton towelling
- 400gsm
- Shawl collar
- Generous pockets
- Detachable belt
- Hanger loop for convenient storage

**PRODUCT CODE**

0047067

Buy to Order - MOQ of 20 units



**GOOD TO KNOW**

This bathrobe is made from 100% organic cotton

### Luxury Eco Slipper

- 100% twill cotton outer material
- 100% cotton padding - no sponge
- 100% bi-colour cotton piping
- Closed toe
- 30.5cm or 29cm
- Pressed cork sole
- Case size 100
- Various packaging options available

**PRODUCT CODE**

Please enquire for details

Buy to Order - MOQ of 10,000 units



Cork sole

### Eco Slipper

- 100% cotton outer material
- 100% cotton padding - no sponge
- Closed toe
- Coconut husk or straw sole
- 29cm length - one size
- Case size 100
- Packaged with kraft paper band

**PRODUCT CODE**

Please enquire for details

Buy to Order - MOQ of 10,000 units



Coconut sole

Straw sole

### Compact Espresso Drawer Tray

- Made from eco-friendly first grade bamboo
- Black finish
- Larger drawer tray with 4 compartments
- Designed to fit most types of compact espresso machines
- Easy-to-clean, food grade bamboo
- 31.5x39x7.5cm

**PRODUCT CODE**

0047618



### Bamboo Welcome Tray



- Made of eco-friendly first grade bamboo
- Black finish
- Elegant soft-contour design
- Easy-to-clean, food-grade bamboo
- Designed to fit most types of compact espresso machines
- 2 year guarantee
- 50x40x4cm

**PRODUCT CODE**

0047619

### Bamboo Amenity Tray

- Black bamboo tray
- Rubberised castor feet
- 30x10cm

Available in Europe (Excl. UK) only:

**PRODUCT CODE**

MARRBAMTRAY



### Tongwell Bamboo Tray



Also available in Natural or Mahogany finish

- Made of eco-friendly first grade bamboo
- Black finish
- Also available in natural or mahogany finish
- Space saving, compact design
- Easy-to-clean, food-grade bamboo
- Designed to fit Corsham or Malvern kettles
- 26x26x3cm

**PRODUCT CODE**

0047109



### Cambourne Plus Bamboo Drawer Tray

- Made of eco-friendly first grade bamboo
- Black finish
- Space saving and ultra compact
- Stores ingredients neatly and keeps them dust free
- Easy-to-clean, food grade bamboo
- Designed to fit Corsham or Malvern kettles
- 27.2x19.4x8.5cm

**PRODUCT CODE**

0047103



### Compact Wooden Welcome Tray

- High quality MDF with ultra strong lacquer finish
- Colour: black brown
- 3 integrated compartments; 2 for sachets and 1 for milk/sugar sticks
- 1 tree planted for every 5 trays sold
- 2 year warranty

Available in Europe (Excl. UK) only:

**PRODUCT CODE**

0037492



For every 5 wooden trays sold, 1 tree will be planted in Zambia. In cooperation with WeForest

### Tray with Drawer

- Made of high quality veneered plywood
- Colour: black brown
- Tray only
- 1 tree planted for every 5 trays sold
- Design your own drawer with removable dividers
- 26.5x19x8.4cm

Available in Europe (Excl. UK) only:

**PRODUCT CODE**

0047207



### Large Wooden Hospitality Tray

- Large hospitality tray, space for coffee machine and kettle
- High quality MDF with ultra strong lacquer finish
- Colour: black brown
- 3 integrated compartments; 2 for sachets and 1 for milk/sugar sticks
- 6 integrated capsule compartments
- 1 tree planted for every 5 trays sold
- 2 year warranty

Available in Europe (Excl. UK) only:

**PRODUCT CODE**

0047208



## Kensington 0.6L Kettle

- Brushed steel finish
- 220-240V, 1000W
- Strix controlled with auto switch off boil dry protection
- Eco-friendly 0.6L capacity to avoid over filling and over boiling
- Concealed element
- 360° base
- Push button hinged lid
- Cord tidy base
- Easy to clean and open

## UK PRODUCT CODE

0044342

## EU PRODUCT CODE

0044343



## 0.6L Plastic Kettle

- 360° cordless
- Made of durable ABS
- Water and energy efficient – 800W
- Automatic shut off
- Boil dry protection
- Operation indicator
- 2 year guarantee

Available in Europe  
(Excl. UK) only:

## WHITE

## PRODUCT CODE

0046163

## BLACK

## PRODUCT CODE

0046164



## Corsham 1L &amp; Malvern 0.5L Kettles

- Advanced technology isolation boil dry
- Dual safe – thermostat and latest technology internal fuse
- Water level gauge window
- Water and energy efficient 800-950W
- Concealed heating element for easy cleaning
- Auto steam switch off
- Auto off power indicator light
- Hinged trigger style locking lid
- Strix controller
- 3 year guarantee



## Corsham 1L

Available in:

## BLACK

PRODUCT CODE 0047104

## BRUSHED STEEL

PRODUCT CODE 0047105

## Malvern 0.5L

Available in:

## BLACK

PRODUCT CODE 0047106

## BRUSHED STEEL

PRODUCT CODE 0047107

## Star 0.5L Kettle

- 360° cordless
- Made of 304 stainless steel
- Water and energy efficient – 1000W
- Automatic shut off
- Boil dry protection
- Strix controller
- Easy-to-clean concealed heating element
- 2 year guarantee

Available in Europe  
(Excl. UK) only:

## BRUSHED STEEL

## PRODUCT CODE

0037493

## BLACK

## PRODUCT CODE

0037494



## Igenix Filter Coffee Machine

- 1.25L/10 cup capacity coffee jug
- Only 750W, 220-240V, 50-60Hz
- Removable funnel with nylon filter
- External water level gauge
- Anti-drip feature
- Keep warm function
- ON/OFF switch with light indicator
- Black plastic housing
- CE & UKCA certified
- 2 year guarantee

Available in UK only:

## PRODUCT CODE

0047251



## 10L Glass Fronted Minibar

- Energy efficient B class
- R600a refrigerant (non-ammonia coolant)
- Petlier cooling technology
- Silent operation
- Interior LED light
- Adjustable left or right door opening
- Adjustable shelving with unique cut to accommodate 1L bottles
- 65 Watt – 220-240V, 50-60Hz
- 3 year guarantee

## UK PRODUCT CODE

0047108

## EU PRODUCT CODE

0047513



## Battery-Free Digital Scales



- Ultra-thin tempered glass
- Battery free – uses kinetic push-button energy
- Displays weight in kg or lb
- LCD display
- Auto power off
- 180kg capacity
- 30x30cm

Available in Europe (Excl. UK) only:

## PRODUCT CODE

0046108



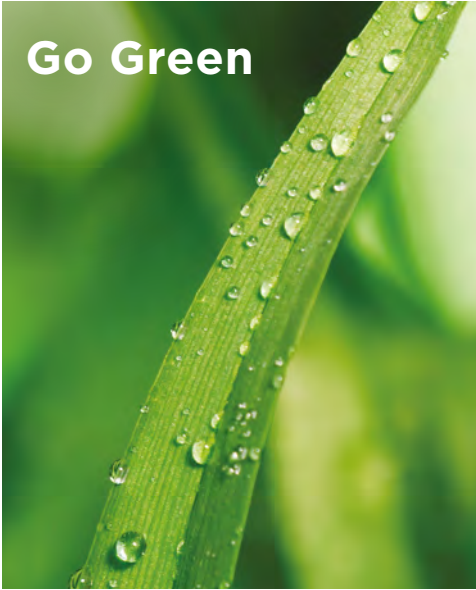
- 8mm toughened safety glass
- Battery free – uses kinetic push-button energy
- Displays weight in kg or lb
- Ultra-large LCD display
- Auto power off
- 180kg capacity
- 31x31cm

Available in UK only:

## PRODUCT CODE

0047112

## Go Green



## Paper Laundry Bag



- PEFC recycled paper laundry bag
- Kraft paper
- Instructions provided in English, French & German
- 29x12x45cm

**UK PRODUCT CODE** 0047518  
**EU PRODUCT CODE** 0047517

## Cotton Laundry Bag



- 100% cotton laundry bag
- Drawstring close
- Black or natural colour
- Black or white 'LAUNDRY' embroidery
- 60x40cm

**BLACK**  
**PRODUCT CODE** 0047706

**NATURAL**  
**PRODUCT CODE** 0047708

Buy To Order - MOQ of 5,000

## Cotton Hair Dryer Bag



- 100% Cotton Hairdryer Bag
- Drawstring close
- Black or natural colour
- Black or white 'HAIRDRYER' embroidery
- 36x28.5cm

**BLACK**  
**PRODUCT CODE** 0047707

**NATURAL**  
**PRODUCT CODE** 0047709

Buy To Order - MOQ of 5,000

## Give your customers the opportunity to recycle waste

## Round Recycling Bin

- Black recycling bin with 2 clearly labelled compartments
- Removable, fire retardant liners
- Rubberised floor protecting base

**Available in UK only:**

**9L**  
**PRODUCT CODE** 0046475



**Available in Europe (Excl. UK) only:**

**10L**  
**PRODUCT CODE** 0047035



## 10L Recycling Bin

- 10L capacity
- 2 flows for sorting
- Lid to hide the bags
- Robust galvanised steel
- Rubber protection at the base
- 27.5x20x34cm

**Available in Europe (Excl. UK) only:**

**PRODUCT CODE** 0047698



## 9L Recycling Bin Inserts

- Inserts fit into any 9L round bin
- The green insert can be added to the bin to offer the recycling segregation without the need for both inserts, or a new bin

**Available in:**

**GREY**  
**PRODUCT CODE** 0047097

**GREEN**  
**PRODUCT CODE** 0047098



## 12L Recycling Bin

- Brushed stainless steel
- 12L total capacity
- 1 x 6L green insert for recycling
- 1 x 6L black insert for general waste
- Removable collar
- Concealed bag feature
- 36.5x27.2x19.2cm

**PRODUCT CODE** 0047718





Our eco-sensitive Forever Collection utilises FSC® white kraft recycled cartons with tamper-proof perforation to reduce interior plastic and wastage. Regular plastic toothbrushes, razors, shoe horns and combs have been replaced with Wheat Straw.

### Shave Kit

- Wheat straw razor
- 18ml/0.65oz Gilchrist & Soames shaving cream
- Degradable tube
- FSC® recycled carton

PRODUCT CODE  
0046033



### Dental Kit

- Wheat straw toothbrush
- 5g Colgate toothpaste
- FSC® recycled carton

PRODUCT CODE  
0046034

Handy  
travel size



### Comb



- Wheat straw comb
- 100% plastic free
- FSC® recycled carton

PRODUCT CODE  
0046035



### Sewing Kit

Sewing kit contains:

- 6 threads and 1 needle wrapped around a piece of card, with 2 white buttons and a safety pin
- Packaged in a degradable plastic bag for safety purposes

PRODUCT CODE  
0046036



Practical  
& Stylish  
Solutions

### Vanity Kit

Vanity kit contains:

- 2 paper stem cotton buds, 2 pads, 1 emery board
- Emery board packaged in a degradable bag to prevent scuffing to cotton pads
- FSC® recycled carton

PRODUCT CODE  
0046037



#### GOOD TO KNOW

Wheat Straw is a raw material that turns waste into treasure. Replacing petroleum based plastics, it reduces the use of oil resources and carbon dioxide emissions. This bio-based material offers a 35-40% plastic reduction compared to regular plastic.

### Cotton Buds

- 4 x paper stem cotton buds
- 100% plastic free
- FSC® recycled carton

PRODUCT CODE  
0046038



### Cotton Balls

- 4 x cotton balls
- 100% plastic free
- FSC® recycled carton

PRODUCT CODE  
0046039



### Cotton Pads

- 4 x cotton pads
- 100% plastic free
- FSC® recycled carton

PRODUCT CODE  
0046040



### Emery Board

- Recyclable and degradable
- Size: 5cm
- FSC® recycled carton

PRODUCT CODE  
0046041



### Shoe Mitt

- White cotton
- 100% plastic free
- Size: 5x17.7cm
- FSC® recycled carton

PRODUCT CODE  
0046043

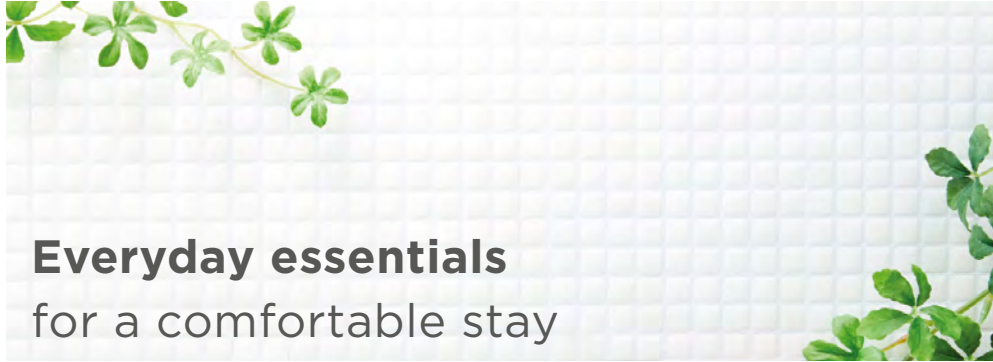


### Bath Salts

- 30g generic bath salts
- Packed in a PE bag with biodegradable additive
- FSC® recycled carton

PRODUCT CODE  
0046046





## Everyday essentials for a comfortable stay

### Sanitary Bag

- PE sanitary bag with biodegradable additive
- Packed directly in white kraft FSC® certified recycled sleeve

**PRODUCT CODE**  
0046044



### Loofah

- 100% plastic free
- Size: 11x16cm
- FSC® recycled carton

**PRODUCT CODE**  
0046045



### Shower Cap

- 45.7cm PE shower cap with biodegradable additive
- Packed directly in white kraft FSC® certified recycled sleeve

**PRODUCT CODE**  
0046042



### Shoe Horn

- Wheat straw shoe horn

**PRODUCT CODE**  
0046047



## Eco-responsible products and packaging which are kind to the environment



### 2-Ply White Cocktail Napkin

- FSC® certified 100% recycled paper
- Recyclable
- Biodegradable and compostable

**Available in:**

**25cm**

**PRODUCT CODE**  
HIL102PNAPK

**33cm**

**PRODUCT CODE**  
HIL132PNAPK



### 40cm 3-Ply White Napkin

- Pre-folded for easy layout
- FSC® certified mix 70%
- Recyclable
- Biodegradable and compostable

**PRODUCT CODE**  
RF-163P



### 40cm Air Laid 8-Fold White Breakfast Napkin

- FSC® certified mix 70%
- Biodegradable
- Compostable EN13432

**PRODUCT CODE**  
HILPSOFTWNAPK



### Wooden Disc Stirrer

- 17cm wooden disc stirrer
- Birchwood FSC® 100% wood
- Biodegradable and compostable

**PRODUCT CODE**  
0042325



BESPOKE

10

## Bespoke - the art of giving you what you need.

At Guest Supply, we pride ourselves on offering bespoke products tailored specifically to your needs. We understand that every customer is unique, with distinct requirements and preferences. That's why we go above and beyond to provide personalised solutions that exceed expectations. From luxurious robes to comfortable slippers and reliable umbrellas, our range of offerings is just the beginning.



We collaborate with industry leading manufacturers to offer you premium custom robes. Explore a wide range of styles, materials, and colours, and allow us to assist you in crafting your ideal robe with our convenient guide provided below.

## FIRST, CHOOSE YOUR ROBE STYLE

### Kimono Bathrobe

- Kimono collar and open cuffs
- Generous pockets
- Double belt loops
- Hanger loop



### Shawl Collar Bathrobe

- Roll-up collar and cuffs
- Generous pockets
- Double belt loops
- Hanger loop



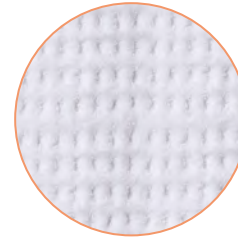
### Hooded Bathrobe

- Extra large hood and open cuffs
- Generous pockets
- Double belt loops
- Hanger loop



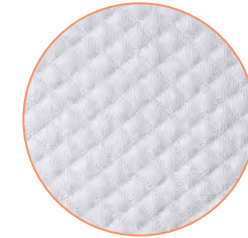
## NEXT, CHOOSE YOUR FABRIC

We can create any style of bathrobe using any of the fabrics below or any other fabric of your choosing.



### Checked

- 100% cotton
- 425 GSM



### Knit Diamond

- 45% cotton, 45% modal, 10% polyester
- 260 GSM



### Microfibre

- 85% polyester, 15% nylon
- 180 GSM



### Terry

- 100% cotton
- 425 GSM



### Velour

- 100% cotton
- 425 GSM



### Waffle Basic

- 67% cotton, 33% polyester
- 208 GSM

## FINALLY, CHOOSE YOUR COLOUR AND ADD YOUR LOGO!

We want your robes to fit in with your hotel perfectly – you can pick exactly what colour you'd like your robes to be – you can even specify a Pantone® colour!

**Please enquire for details.**  
**MOQ of 300 and lead times apply.**



Experience personalised comfort with our bespoke slippers. Choose from a range of materials, piping styles, fillings, soles and packaging options to create your perfect slipper. Whether colour matching to your branding, or adding logos, we'll ensure every detail reflects your style.

## FIRST, CHOOSE YOUR STYLE



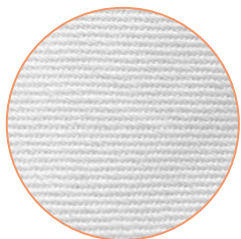
Open Toe



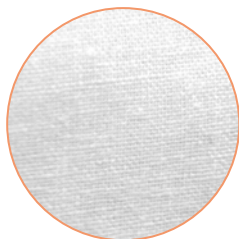
Closed Toe

## NEXT, CHOOSE YOUR FABRIC

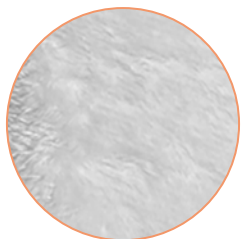
We can create any style of slipper using any of the fabrics below or any other fabric of your choosing.



**Twill Cotton**  
• 100% cotton



**Cotton**  
• 100% cotton

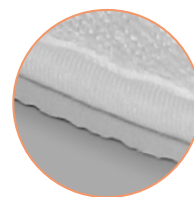


**Long Hair Velvet**  
• 100% polyester

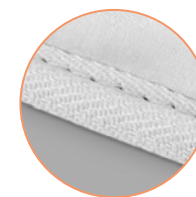


**Velour**  
• 20% cotton  
• 80% polyester

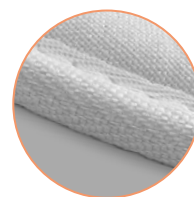
## NOW, CHOOSE YOUR PIPING



**Cloth**  
• 100% polyester



**Cotton**  
• 100% cotton

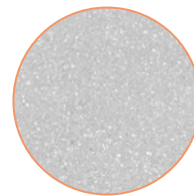


**Deluxe**  
• 30% cotton  
• 70% polyester



**Bi-colour**  
• Cotton or polyester

## THEN, YOUR FILLING



Sponge



Cotton



Jute

## FINALLY, YOUR SOLE



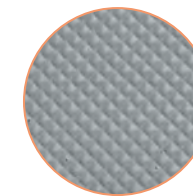
Straw



Coconut



Wavy Cork



EVA

Please enquire for details. MOQ of 10,000 and lead times apply.

We present a variety of sustainable pen choices, but it's just a glimpse of what we can provide. Customisation options include matching plastic and paper components to your brand's Pantone® colours and adding your logo. Should you have a specific design in mind, share an image with us, and let us find your ideal match.

#### Paper Pen with Paper Lid

- Paper barrel and paper lid



#### Cork Pen with Recycled Plastic Parts

- 100% cork barrel click pen



#### Recycled Plastic Twist Pen

- Recycled black plastic twist pen
- Metal clip and ring, gold or silver
- Also available as a metal pen



#### Paper Pen with Recycled Plastic Parts

- Paper barrel click pen



#### Bamboo Pen with Recycled Plastic Parts

- 100% bamboo barrel click pen



**MOQ of 10,000.**

**Paper pens can be natural or coloured.**

**Plastic and metal parts can be Pantone® matched.**

We can provide a full range of personal care accessories including vanity kits, dental kits, shaving kits and mending kits, all customisable with your hotel's branding and logo. Opt for eco-conscious FSC® certified packaging and materials like wheat straw and bamboo for the contents, to align with your sustainability goals.



Please enquire for details. MOQ of 10,000 and lead times apply.

Among the extensive range of umbrellas on offer, we've selected three of the most popular styles tailored for hotels. Choose your preferred design, specify your brand's colour scheme, and indicate logo placement — leave the rest to us as we bring your vision to life.

#### Umbrella with Wooden Shaft & Handle

- Auto-release
- 120cm diameter



#### Umbrella with Metal Shaft & Wooden Handle

- Auto-release
- 137cm diameter



#### Mini Umbrella

- Auto-release
- 99cm diameter



**MOQ of 500.**

**Logo printing available on 1 or more panels.**



FULL-SPECTRUM SOLUTIONS



Find us on Social Media

